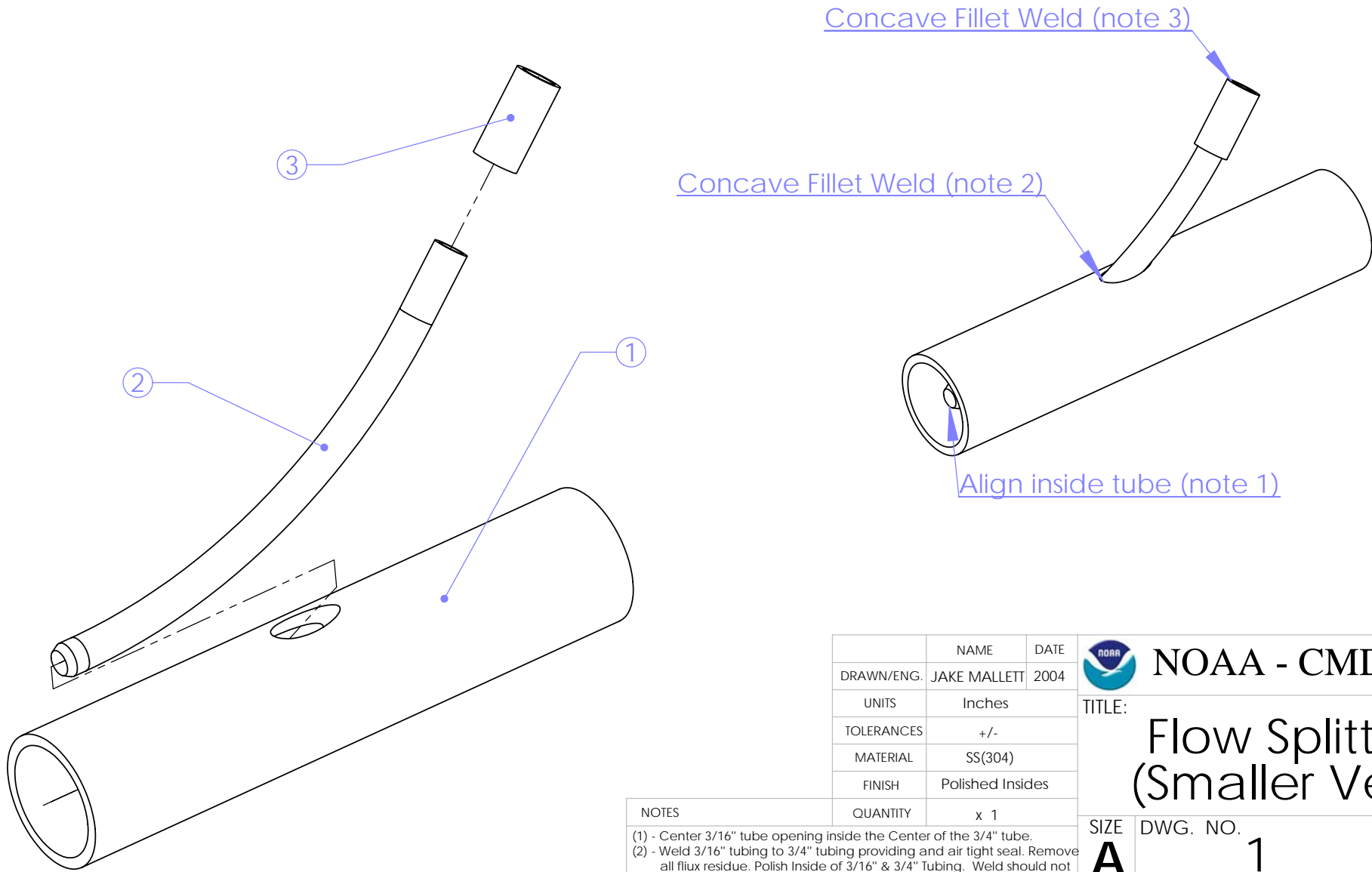


ITEM NO.	QTY.	PART NO.	DESCRIPTION
1	1	3_4in OD 5_8in ID SS304 tubing	3_16in Diam. hole drilled in side wall for Pitot tube
2	1	3_16in OD 9_64in ID SS304 tubing	Pitot Tube with 3in radius bend 1_8in from end
3	1	1_4in OD 3_16in ID SS304 tubing	1_2in long



	NAME	DATE
DRAWN/ENG.	JAKE MALLET	2004
UNITS	Inches	
TOLERANCES	+/-	
MATERIAL	SS(304)	
FINISH	Polished Insides	
QUANTITY	x 1	



NOAA - CMDL



TITLE:

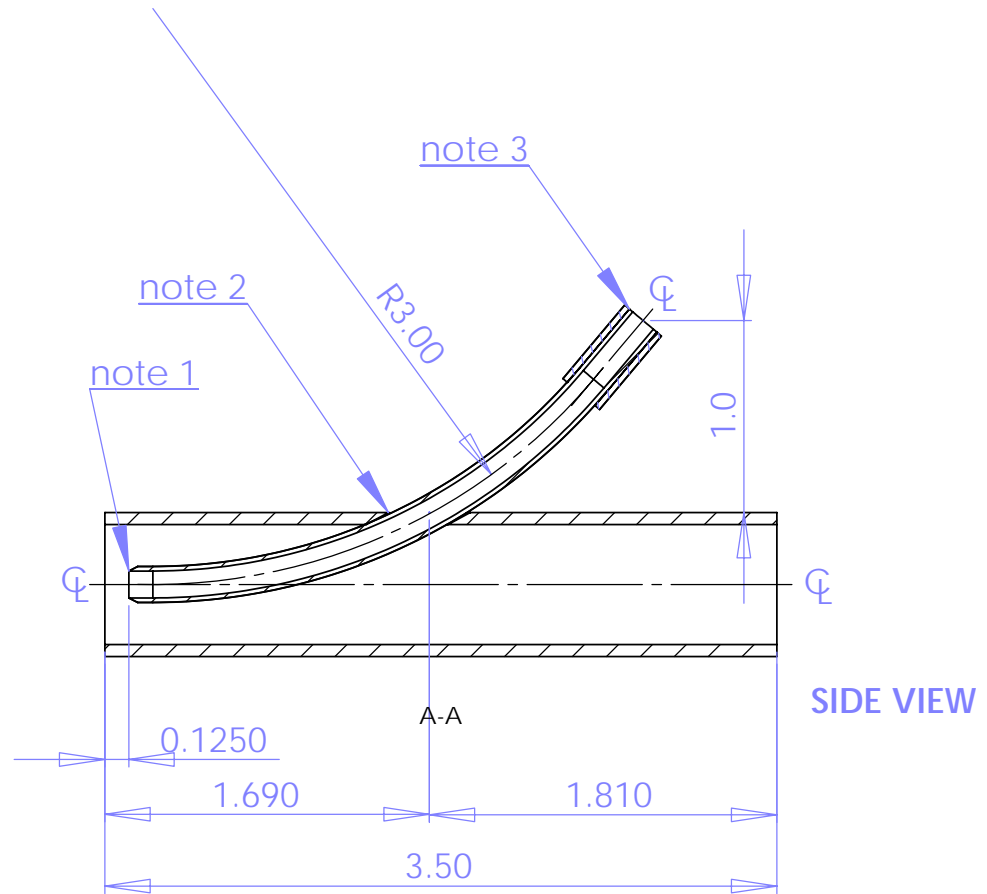
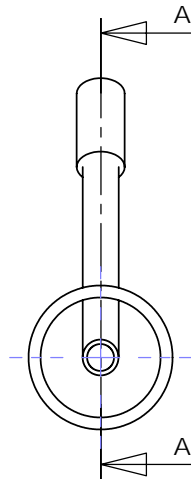
Flow Splitter (Smaller Ver.)

SIZE	DWG. NO.	REV
A	1	1

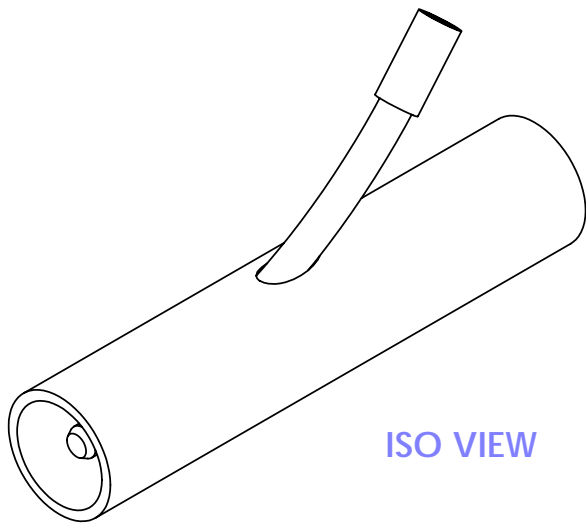
- NOTES
- (1) - Center 3/16" tube opening inside the Center of the 3/4" tube.
 - (2) - Weld 3/16" tubing to 3/4" tubing providing and air tight seal. Remove all flux residue. Polish Inside of 3/16" & 3/4" Tubing. Weld should not alter flow patterns of either tube.
 - (3) - Weld the 1/4" tube to the 3/16" tube applying the previous stated criteria.

SCALE: 1: 3/4 & 1:1 SHEET 1:5

INLET VIEW



SIDE VIEW



ISO VIEW

	NAME	DATE
DRAWN/ENG.	JAKE MALLET	2004
UNITS	Inches	
TOLERANCES	+/-	
MATERIAL	SS(304)	
FINISH	Polished Insides	
NOTES	QUANTITY	x 1

- NOTES
- (1) - Center 3/16" tube opening inside the Center of the 3/4" tube.
 - (2) - Weld 3/16" tubing to 3/4" tubing providing and air tight seal. Remove all flux residue. Polish Inside of 3/16" & 3/4" Tubing. Weld should not alter flow patterns of either tube.
 - (3) - Weld the 1/4" tube to the 3/16" tube applying the previous stated criteria.



NOAA - CMDL



TITLE:

Flow Splitter
(Smaller Ver.)

SIZE
A

DWG. NO.

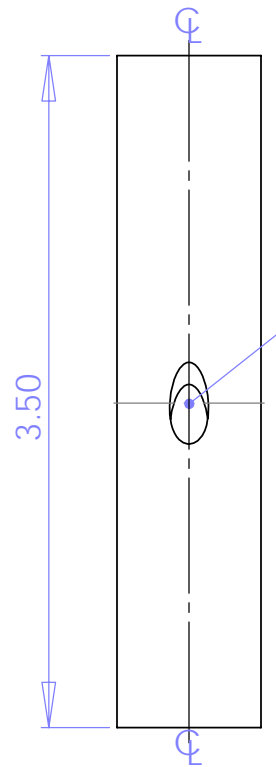
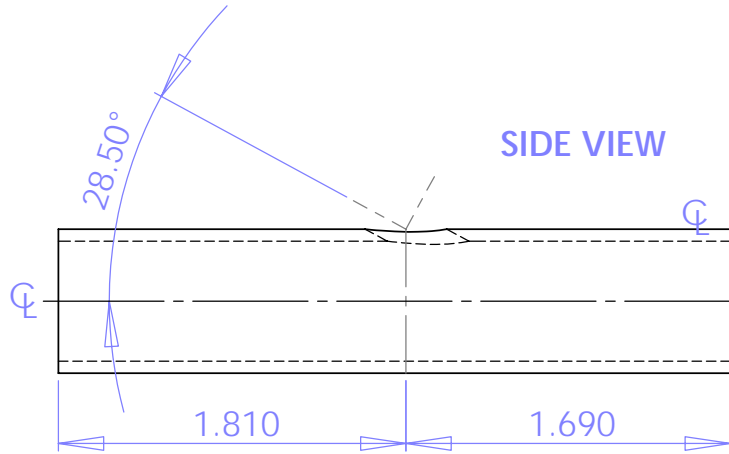
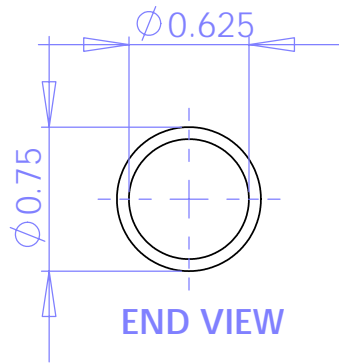
1

REV

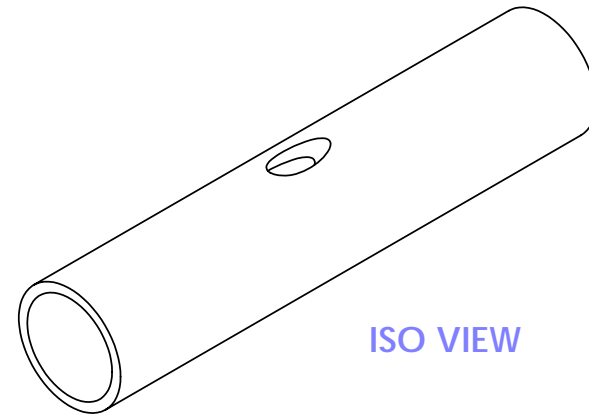
1

SCALE: 1:1

SHEET 2:5



$\phi 3/16''$ Hole
at a 28.5° from
the Horizontal ϕ
(See SIDE VIEW For
Drilling Orientation)



	NAME	DATE
DRAWN/ENG.	JAKE MALLET	2004
UNITS	Inches	
TOLERANCES	+/- .01	
MATERIAL	SS(304)	
FINISH	Polished Insides	
NOTES	QUANTITY	x 1

Reaming the 3/16" hole for best fit and orientation of the 3/16" Diam. tube might be desired



NOAA - CMDL



TITLE:

3/4" SS Flow
Splitter Tube

SIZE
A

DWG. NO.

1

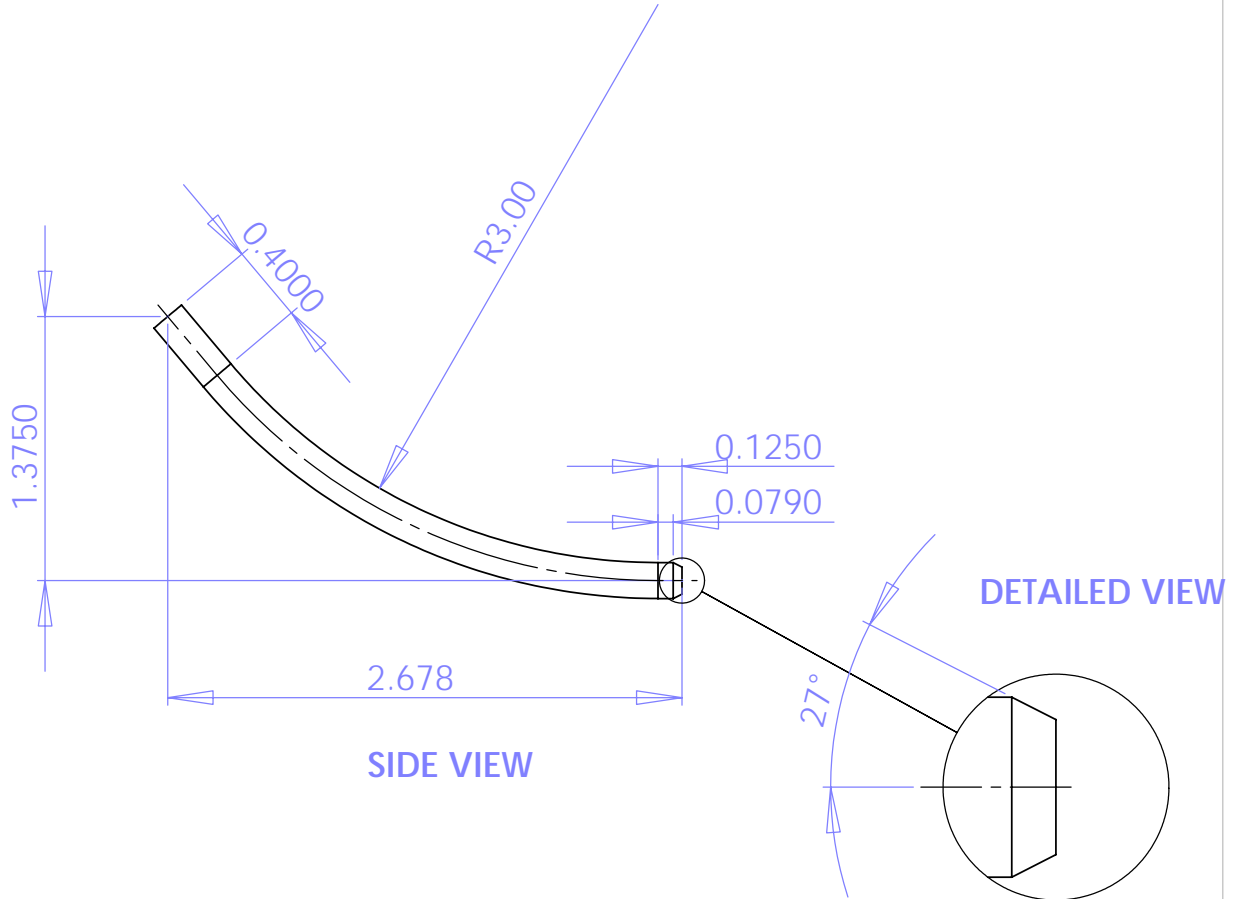
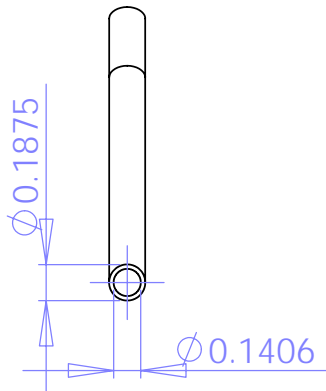
REV

1

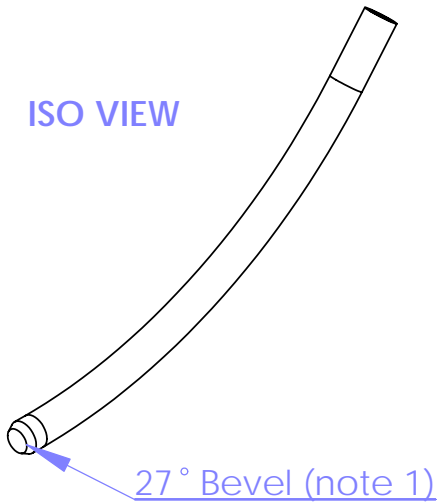
SCALE: 1:1

SHEET 3:5

INLET END VIEW



ISO VIEW



	NAME	DATE
DRAWN/ENG.	JAKE MALLET	2004
UNITS	Inches	
TOLERANCES	+/- .005	
MATERIAL	SS(304)	
FINISH	Polished Insides	
NOTES	QUANTITY	x 1

An Approximate 27deg Bevel onto inlet end of 3/16" tube forming a sharp Edge (see Detail A)



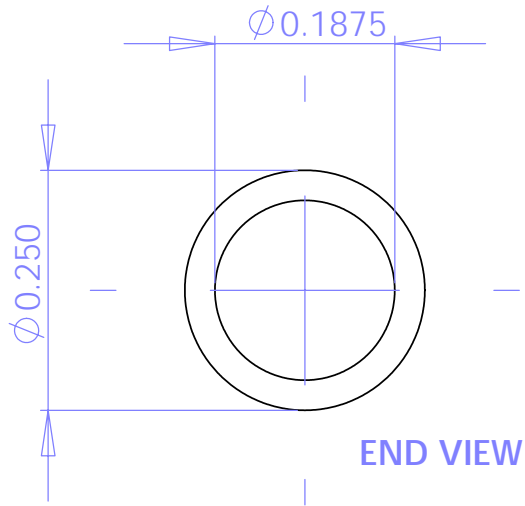
NOAA - CMDL



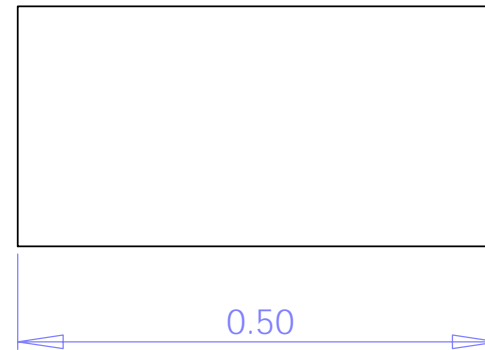
TITLE:
**3/16" SS Flow
Splitter Tube**

SIZE A	DWG. NO. 1	REV 1
------------------	----------------------	-----------------

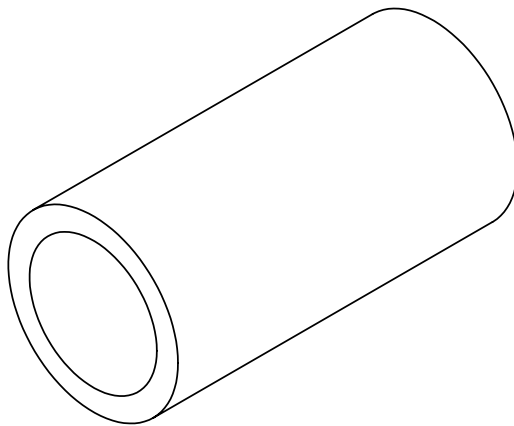
SCALE: 1:1 SHEET 4:5



SIDE VIEW



ISO VIEW



	NAME	DATE
DRAWN/ENG.	JAKE MALLET	2004
UNITS	Inches	
TOLERANCES	+/- .01	
MATERIAL	SS(304)	
FINISH	none	
NOTES	QUANTITY	x 1



NOAA - CMDL



TITLE:

1/4" SS Flow
Splitter Tube Tip

SIZE
A

DWG. NO.
1

REV
1

SCALE: 5:1

SHEET 5:5