


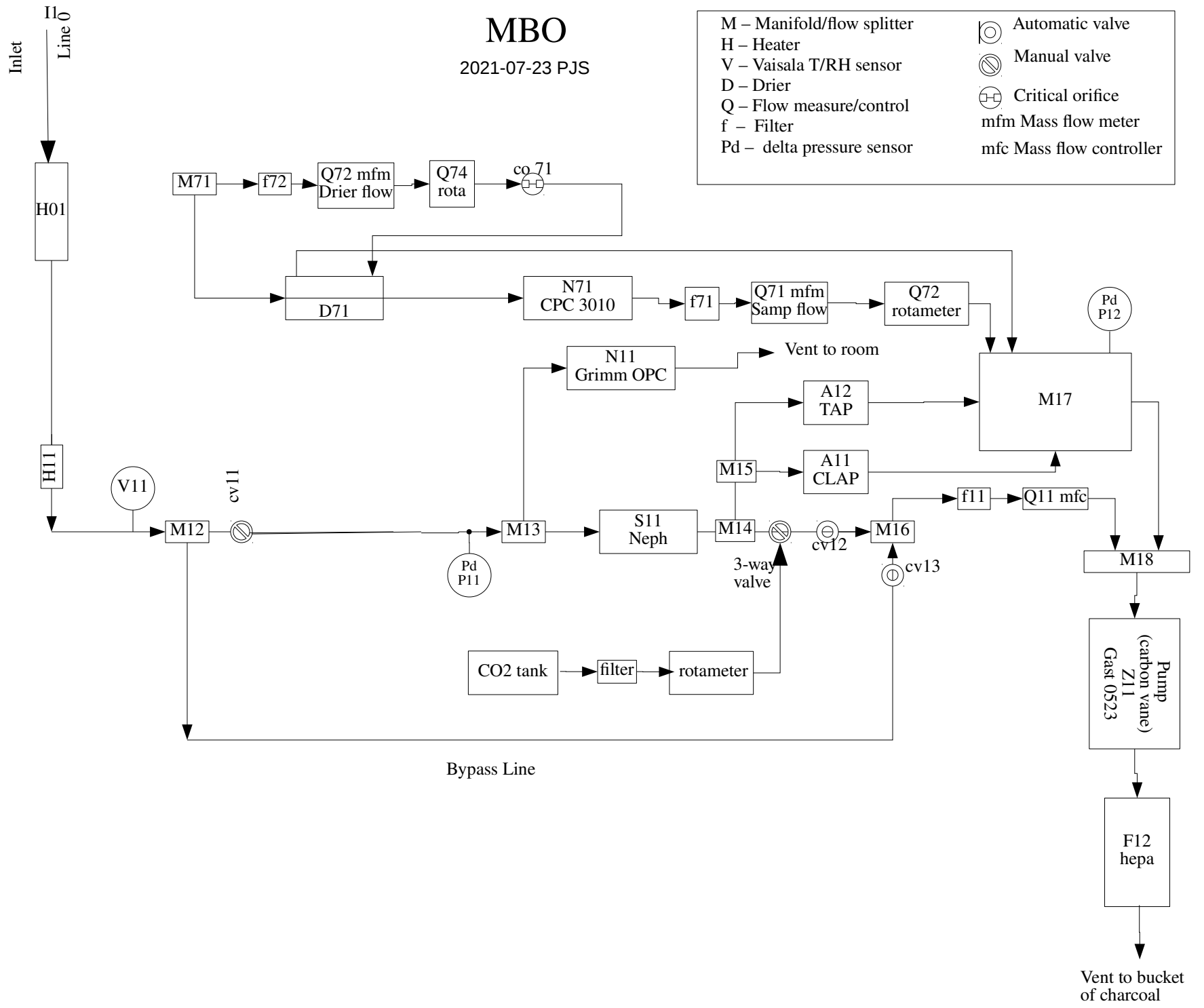


# MBO

2021-07-23 PJS

M – Manifold/flow splitter	 Automatic valve
H – Heater	 Manual valve
V – Vaisala T/RH sensor	 Critical orifice
D – Drier	mfm Mass flow meter
Q – Flow measure/control	mfc Mass flow controller
f – Filter	
Pd – delta pressure sensor	



Bypass Line

Bap\_B\_3W -> BaS\_A11 (PSAP)  
Bap\_G -> Ba0\_A11 (PSAP adj to 550nm))  
Bap\_G\_3W -> BaL\_A11 (PSAP)  
Bap\_R\_3W -> BaC\_A11 (PSAP)  
CLAP\_BapB -> BaB\_A12  
CLAP\_BapG -> BaG\_A12  
CLAP\_BapR -> BaR\_A12  
RefBbsp\_B -> BbsB\_S11  
RefBbsp\_G -> BbsG\_S11  
RefBbsp\_R -> BbsR\_S11  
RefBsp\_B -> BsB\_S11  
RefBsp\_G -> BsG\_S11  
RefBsp\_R -> BsR\_S11  
CN\_control -> N\_N71  
P\_refNeph -> P\_S11

dP\_neph\_imp\_hPa -> Pd\_P11  
dP\_spare2 -> Pd\_P12 (system vacuum)  
Flags -> F\_aer  
Q\_analyzer\_lpm -> Q\_Q11  
Q\_CN\_lpm -> Q\_Q71  
Q\_CNdrier\_lpm -> Q\_Q72  
T\_Inlet -> T\_V11  
T\_rack -> T\_V02  
T\_refInlet -> Tu\_S11  
T\_refNeph -> T\_S11  
T\_stack\_degC -> T\_V51  
T\_uMAC\_degC -> T\_X1  
RH\_Inlet -> U\_V11  
RH\_Rack -> U\_V02  
RH\_refInlet -> Uu\_S11  
RH\_refNeph -> U\_S11  
V\_uMAC\_V -> V\_X1  
WD -> Wd\_X3  
WS -> Ws\_X3

BaS\_A11 -> Bap\_B\_3W (PSAP)  
Ba0\_A11 -> Bap\_G (PSAP, 550 nm)  
BaL\_A11 -> Bap\_G\_3W (PSAP)  
BaC\_A11 -> Bap\_R\_3W (PSAP)  
BaB\_A12 -> CLAP\_BapB  
BaG\_A12 -> CLAP\_BapG  
BaR\_A12 -> CLAP\_BapR  
BbsB\_S11 -> RefBbsp\_B  
BbsG\_S11 -> RefBbsp\_G  
BbsR\_S11 -> RefBbsp\_R  
BsB\_S11 -> RefBsp\_B  
BsG\_S11 -> RefBsp\_G  
BsR\_S11 -> RefBsp\_R  
N\_N71 -> CN\_concentration (TSI 3760)  
N\_N72 -> CN\_concentration (MCPC)  
P\_S11 -> P\_refNeph

Pd\_P11 -> dP\_neph\_imp\_hPa  
Pd\_P12 -> dP\_spare2 (system vacuum)  
F\_aer -> Flags  
Q\_Q11 -> Q\_analyzer\_lpm  
Q\_Q71 -> Q\_CN\_lpm  
Q\_Q72 -> Q\_CNdrier\_lpm  
T\_S11 -> T\_refNeph  
T\_V02 -> T\_rack  
T\_V11 -> T\_Inlet  
T\_V51 -> T\_stack\_degC  
T\_X1 -> T\_uMAC\_degC  
Tu\_S11 -> T\_refInlet  
U\_S11 -> RH\_refNeph  
U\_V02 -> RH\_rack  
U\_V11 -> RH\_Inlet  
Uu\_S11 -> RH\_refInlet  
V\_X1 -> V\_uMAC\_V  
Wd\_X3 -> WD  
Ws\_X3 -> WS