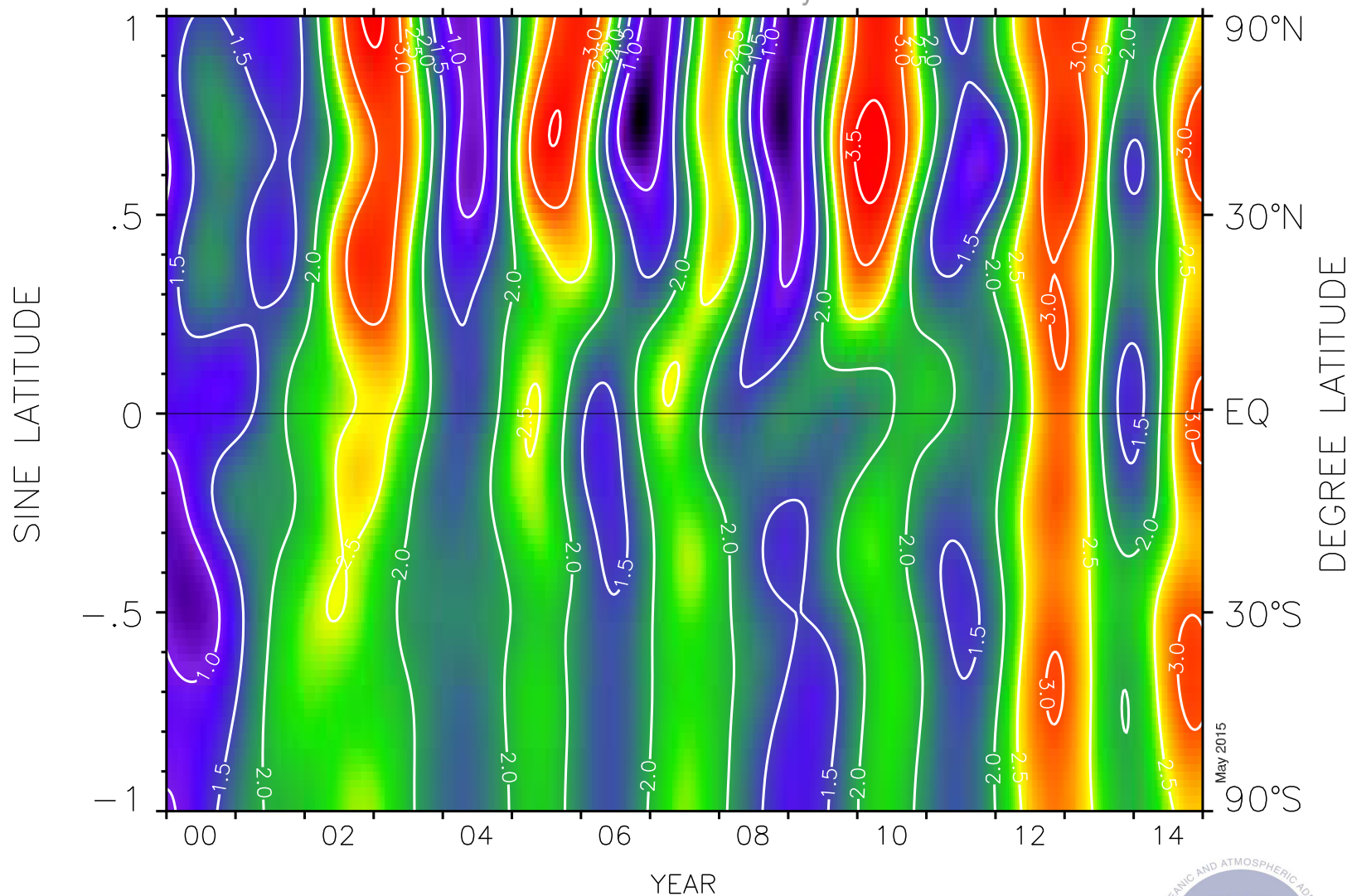


# Growth Rate of Atmospheric Carbon Dioxide (ppm yr<sup>-1</sup>)

NOAA ESRL Carbon Cycle



Contour plot showing the temporal and spatial variations in the atmospheric increases of carbon dioxide. The cooler colors (green, blue, violet) represent periods of lower than average growth rates and the warmer colors (yellow, orange, red) represent periods of higher growth rates. The plot is derived from measurements of samples collected at the Carbon Cycle cooperative air sampling network sites. The variations in the growth rate of this climatically important gas are due to interannual variations in the imbalance between sources and sinks, and also to variations in atmospheric transport. Contact: Dr. Ed Dlugokencky, NOAA ESRL Carbon Cycle, Boulder, Colorado, (303) 497-6228, ed.dlugokencky@noaa.gov, <http://www.esrl.noaa.gov/gmd/ccgg/>.

