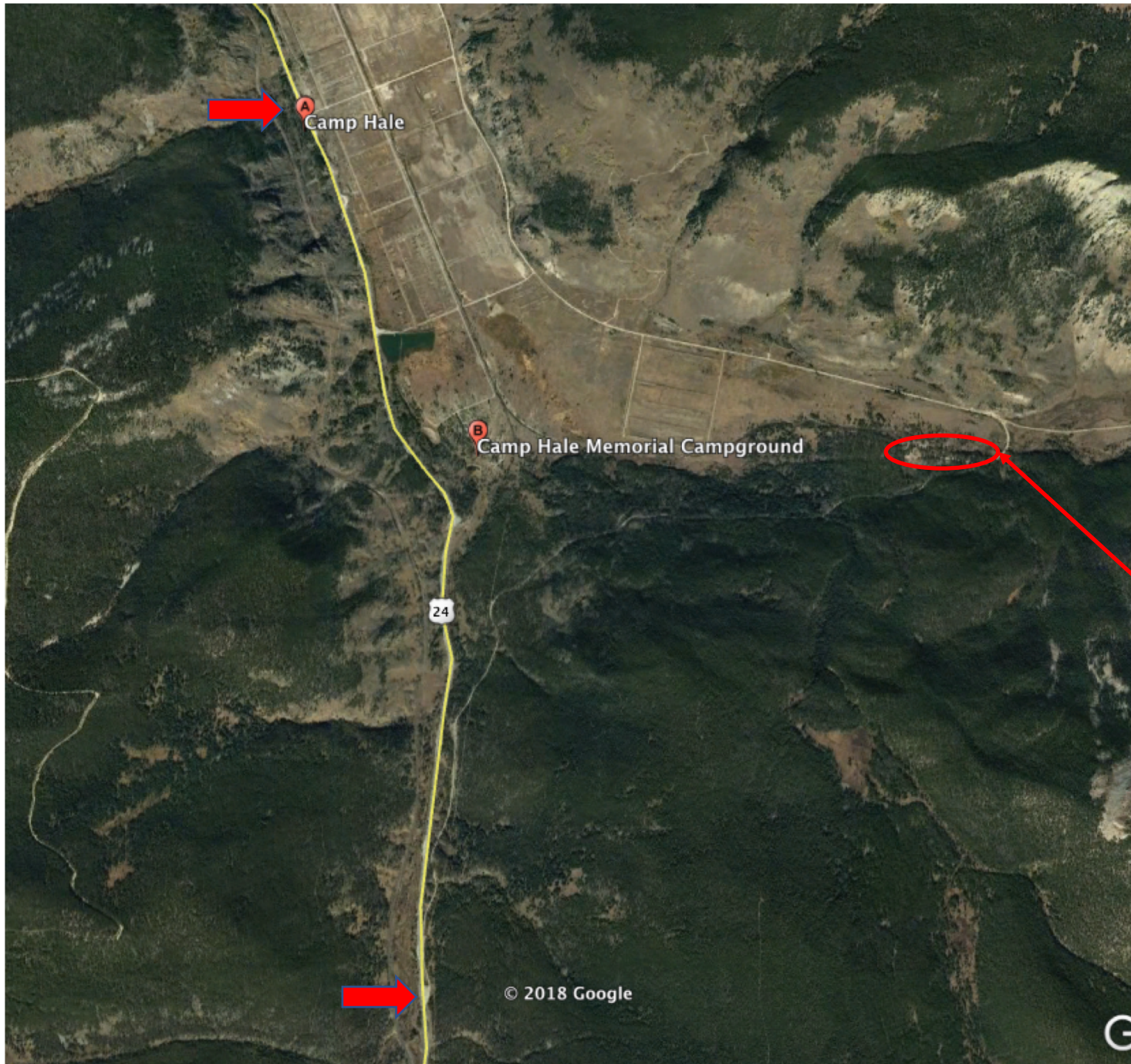


**North Entrance**



**Camp Hale East Fork  
Group Camping Loop**  
*(not same as regular Camp  
Hale campground area)*

*\*If gate is "closed" check  
the lock. We often keep  
the gate pushed closed to  
deter random public from  
driving through camp.  
Please close gate behind  
you after you enter.*

**South Entrance**

## North Entrance



- **Exit Hwy 24 at "A"**
- **Proceed straight across bridge**
- **Go to tee intersection & make right**
- **Follow 714 straight past multiple side roads to Y intersection**
- **Bare right onto 726 and pass small pond**
- **Group spot entrance on right after road enters into the trees**



© 2018 Google

Google Earth

- **Exit Hwy 24 at dirt parking lot on east side of road**
- **Proceed onto forest road 726 (north end of lot)**
- **Follow 726 around ridge and down toward valley floor**
- **Group spot entrance on left just before road enters into the grassy meadow**



**South Entrance** 