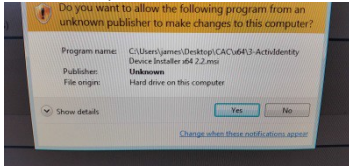


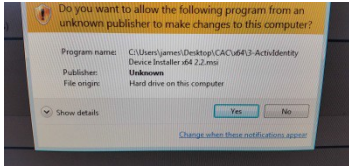
Install CAC Reader Windows

1. Download <ftp://aftp.cmdl.noaa.gov/user/salzman/CAC-Windows.zip>
2. Unzip CAC-Windows and open the folder
3. Double Click Smartcard.bat (A command prompt (Black window) will appear)
4. You may get a User Account control for the following files click yes to all
 - a. 1-ActivClient CAC (x64 or x86) 6.2.msi
 - b. 2-FIXS1206012.msp
 - c. C:\Windows\Installer\Randomstring
 - d. 3-ActivIdentity Device Installer x64 2.2.msi

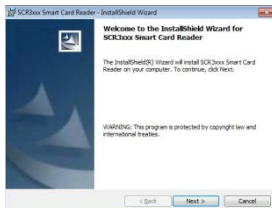


5. You may get a User Account control for the following files click yes to all

- a. 4-SCR3xxx Smart Card Reader.msi



6. Click Next



- a. Accept The license agreement and click next > Select anyone who uses this computer, and next > Select Complete and next > Click install > And finish > Click NO to restart later

7. You may get a User Account control for the following files click yes to all

- a. 5-SCR3xxx_V8.45.exe

- b. Accept The license agreement and click next > Select Complete and next > Click install > And finish > Click NO to restart later

8. You may get a User Account control for the following files click yes to all

- a. 5-SCR3xxx_V8.45.exe

9. You may get a User Account control for the following files click yes to all

- a. 6-SXR3xxx_DriversOnly_V8.41.exe

- b. You may get a Windows can't verify the publisher of this software, click Install this driver software anyway



- c. Click Finish and NO to restart later

10. A new icon should be added to your task bar (bottom right corner)




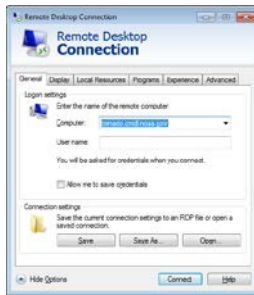
11. If you insert your CAC card it should turn blue



- a. This means the card is accepted.
- b. If not reboot your computer
- c. If after a reboot the icon doesn't turn blue with the CAC card inserted into the card reader email gmd.help@noaa.gov and attach the files AClog.txt, AClog2.txt, AClog3.txt from either CAC-Windows\x64 or CAC-Windows\x86

Using Remote desktop

1. Start Juniper network Connect first 
2. Click Start > All Programs > Accessories > Remote Desktop (May be in Communications > Remote Desktop)
3. On General tab: computer: Tornado.cmdl.noaa.gov (or admin, or your desktop)



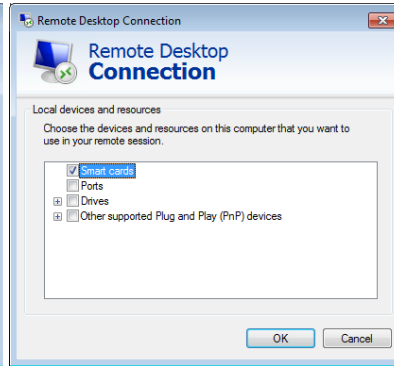
a.

4. Click More options > Local Resources > Under Local Devices and Resources > More> and check smart cards

a. You can select Ports, Drives, and Other if you want your local computer drives/printers/etc to appear on the remote system)



b.



5. Click ok
6. Click back to General Tab and click save
7. Click Connect
8. Enter Pin under Windows Security



a.

- b. If you get a failed pin, make sure your entering your correct 6-8 numeric pin number only. 3 incorrect attempts will lock your pin that can only be unlocked by taking your CAC to NOAA Badging (303-497-6119 (GB515) or GSD Help Desk (303-497-4357) in 2B404. GMD IT cannot unlock Smart Cards (CAC).



c.