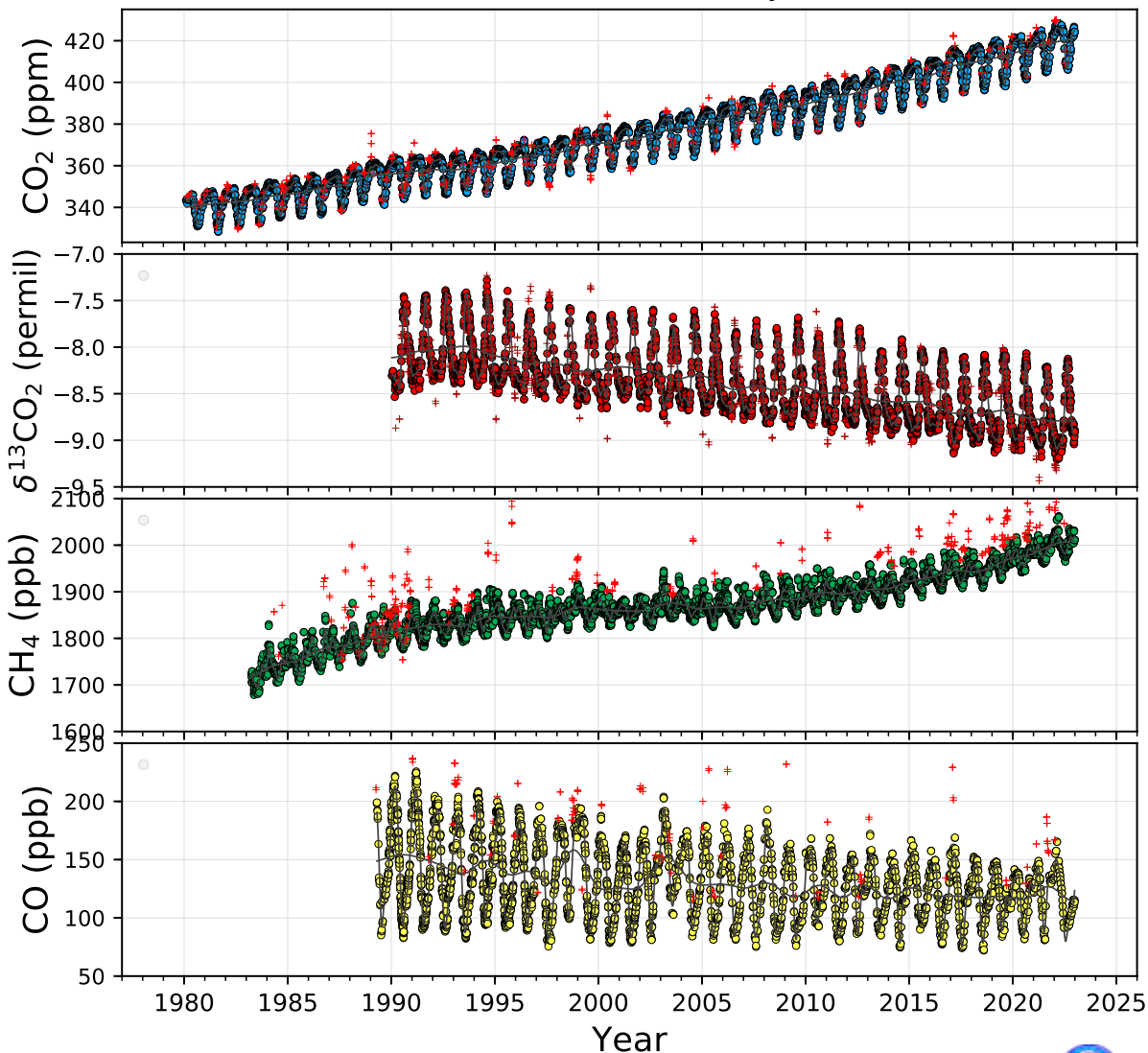


Barrow, Alaska NOAA GML Carbon Cycle



2023-October-26

Time series showing atmospheric carbon dioxide, the carbon-13/carbon-12 isotopic ratio of carbon dioxide, methane and carbon monoxide from air collected weekly in glass containers. The isotope measurements are made at the University of Colorado INSTAAR, all others are made at NOAA. Samples that are regionally representative (circle), and influenced by local effects (plus) are shown. A smooth curve and long-term trend are fitted to the representative measurements (circle). Contact: Dr. Arlyn Andrews, NOAA Global Monitoring Laboratory, arlyn.andrews@noaa.gov, <https://gml.noaa.gov/ccgg/>.

