

Battery Replacement Instructions for Manual PSU's



1. Disconnect the unit from the power supply.



2. Remove cover from the electronics box inside the unit using a short Phillips head screwdriver.



Remove 3 front screws

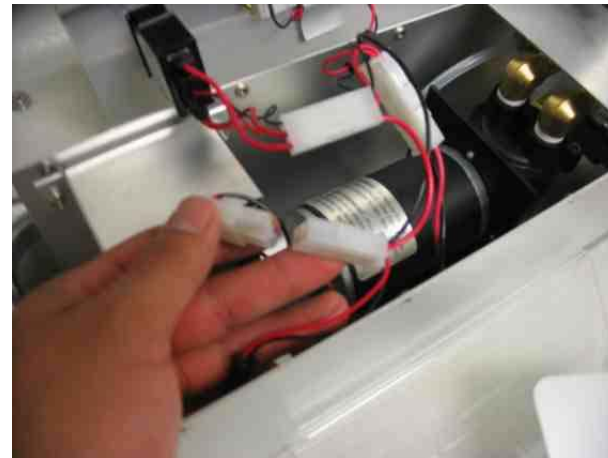
Remove 3 rear screws



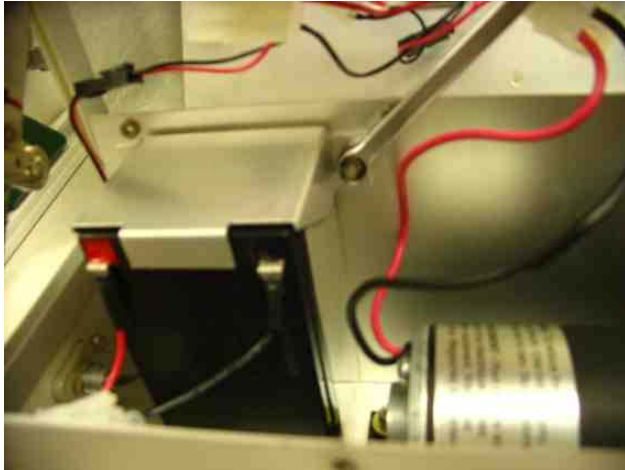
3. Lift the cover and rest it as in picture below .



4. Disconnect battery from the unit's circuitry.



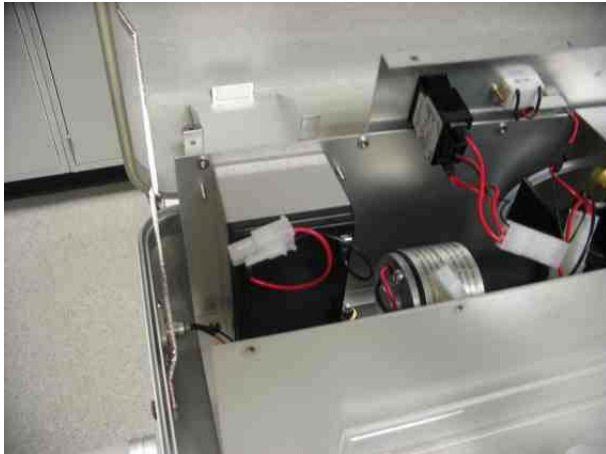
5. Remove the 2 battery hold-down nuts using a 5/16" wrench, then remove the hold-down bracket.



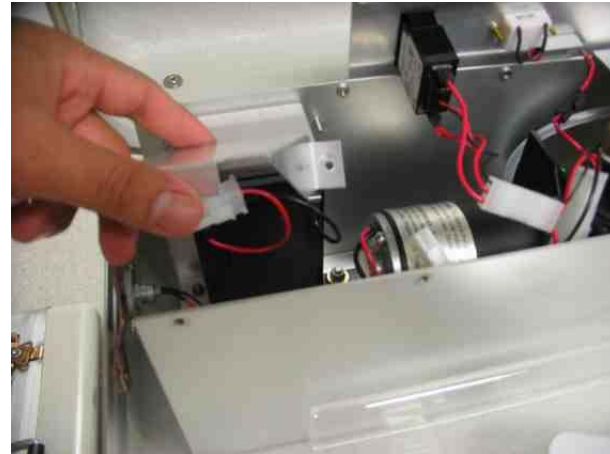
6. Remove the old lead-acid battery. Do not remove the wires and connector attached to battery.



7. Set the new lead-acid battery in place. Note that the new battery includes wires and connector.



8. Replace the battery hold-down bracket and hold-down nuts.



9. Reconnect battery to circuitry.



10. Replace cover and front and rear screws.



Replace 3 front screws

Replace 3 rear screws



11. Turn on unit and make sure that voltmeter on unit reads ~12V DC while unit is running. Turn unit off.



12. Connect the charger to the unit to charge the battery before collecting a sample. The fast-charge light on the charger goes out when the battery is fully charged. Charging may take up to 12 hours.



Charging battery



Battery fully charged