

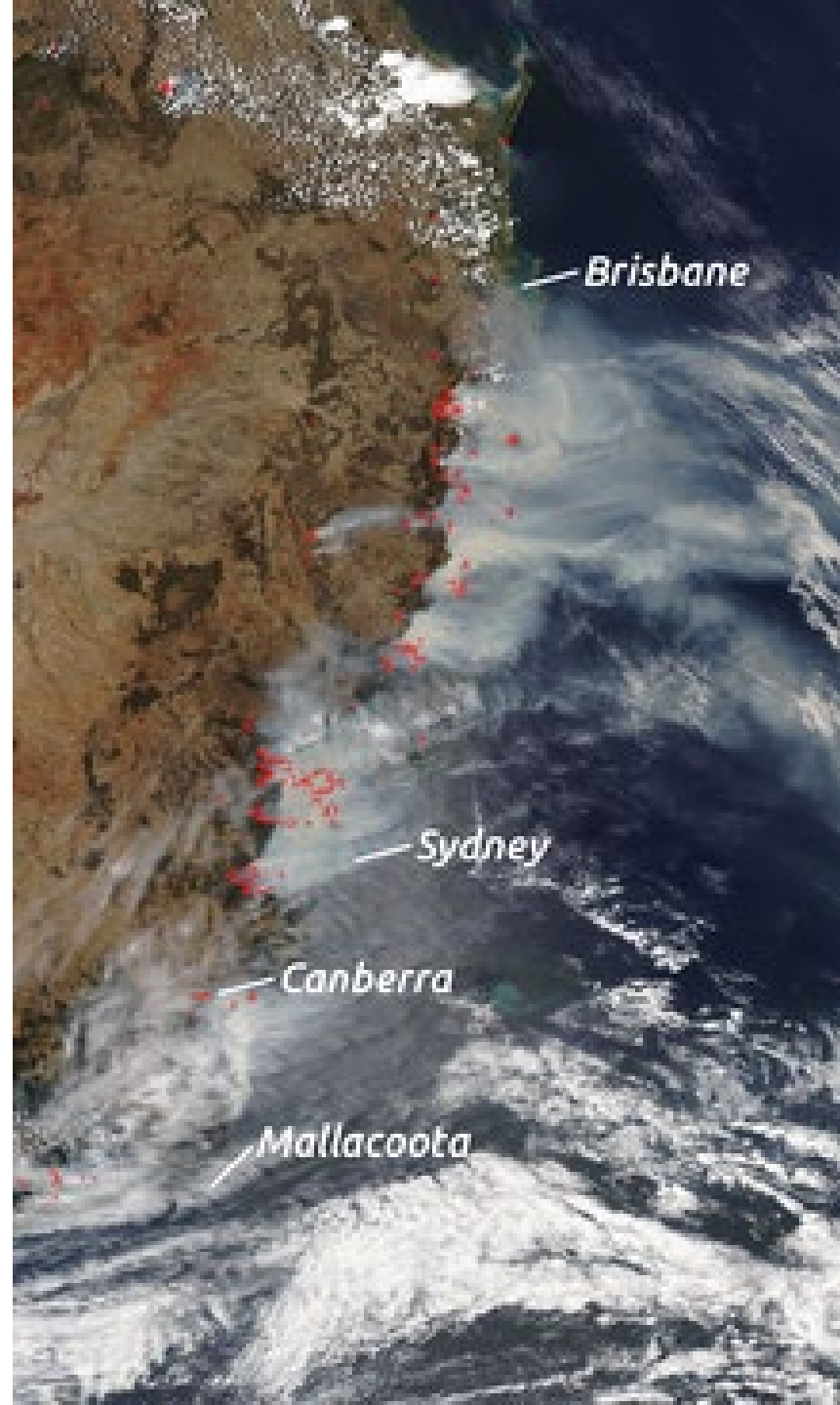


# The 2019/20 Australian Bushfires

Ray Langenfelds, Paul Krummel, Zoe Loh and Elise-Andree Guerette

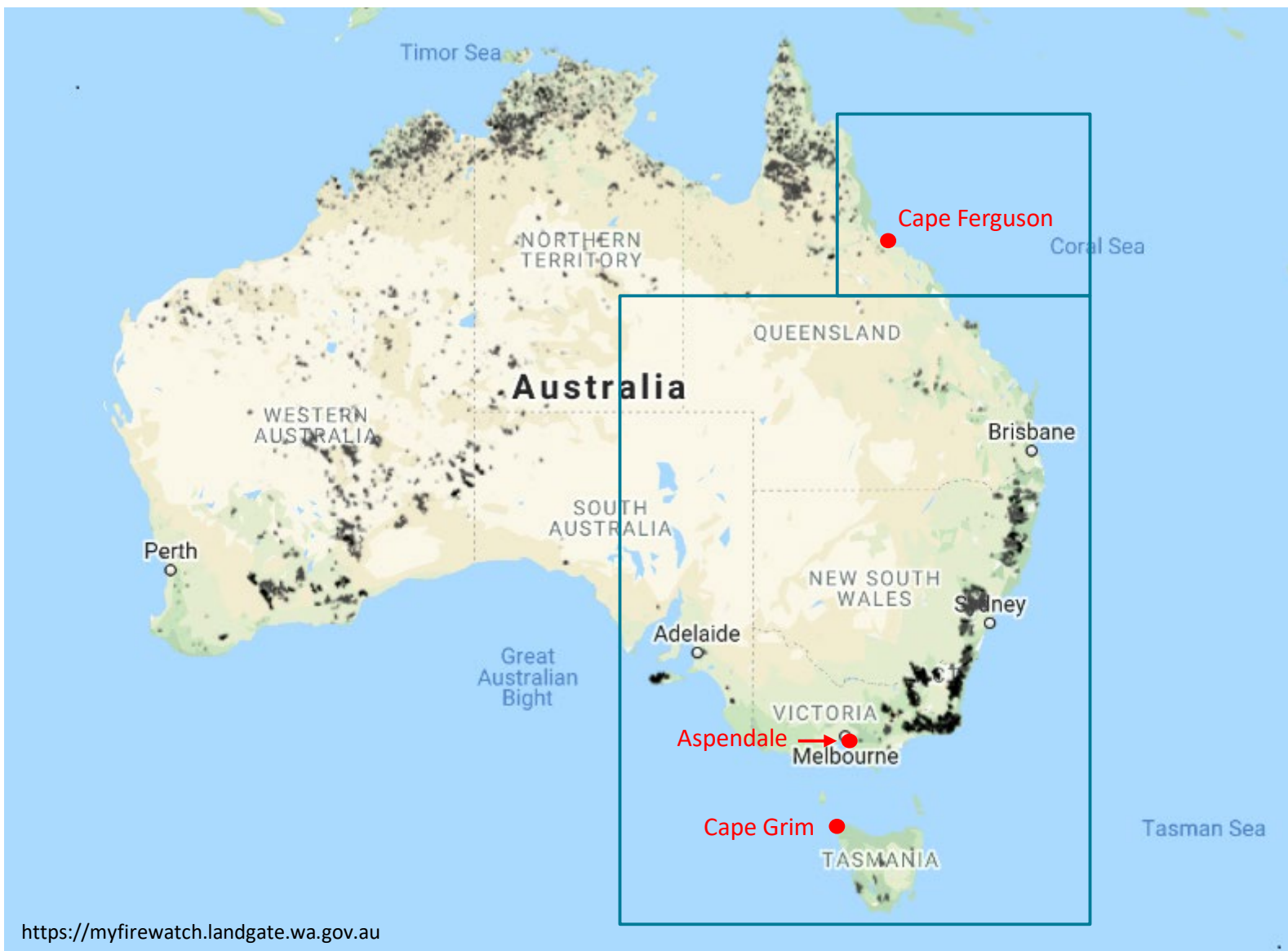
Climate Science Centre, CSIRO Oceans & Atmosphere

21-Jul-2020



NASA satellite image  
7-Dec-2019

# Burned area in 2019/20

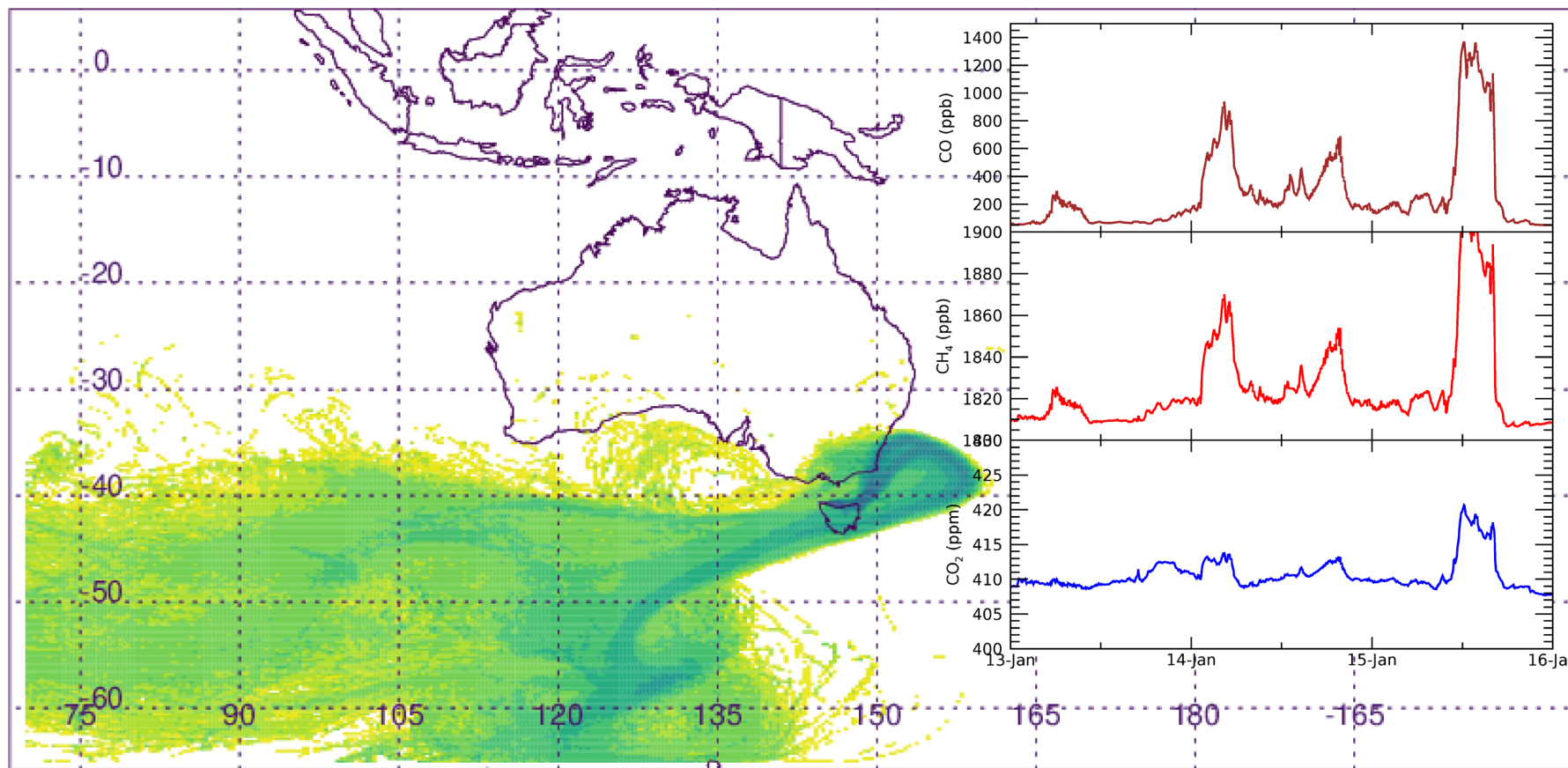


## East Australia fires:

- \* June 2019 – February 2020
- \* > 10 million hectares burned, mainly in NSW and VIC, but also QLD, TAS and SA
- \* temperate forest and farmland



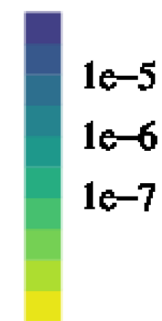
# Smoke plumes from NSW/VIC fires transported over Cape Grim in January 2020



Met Office

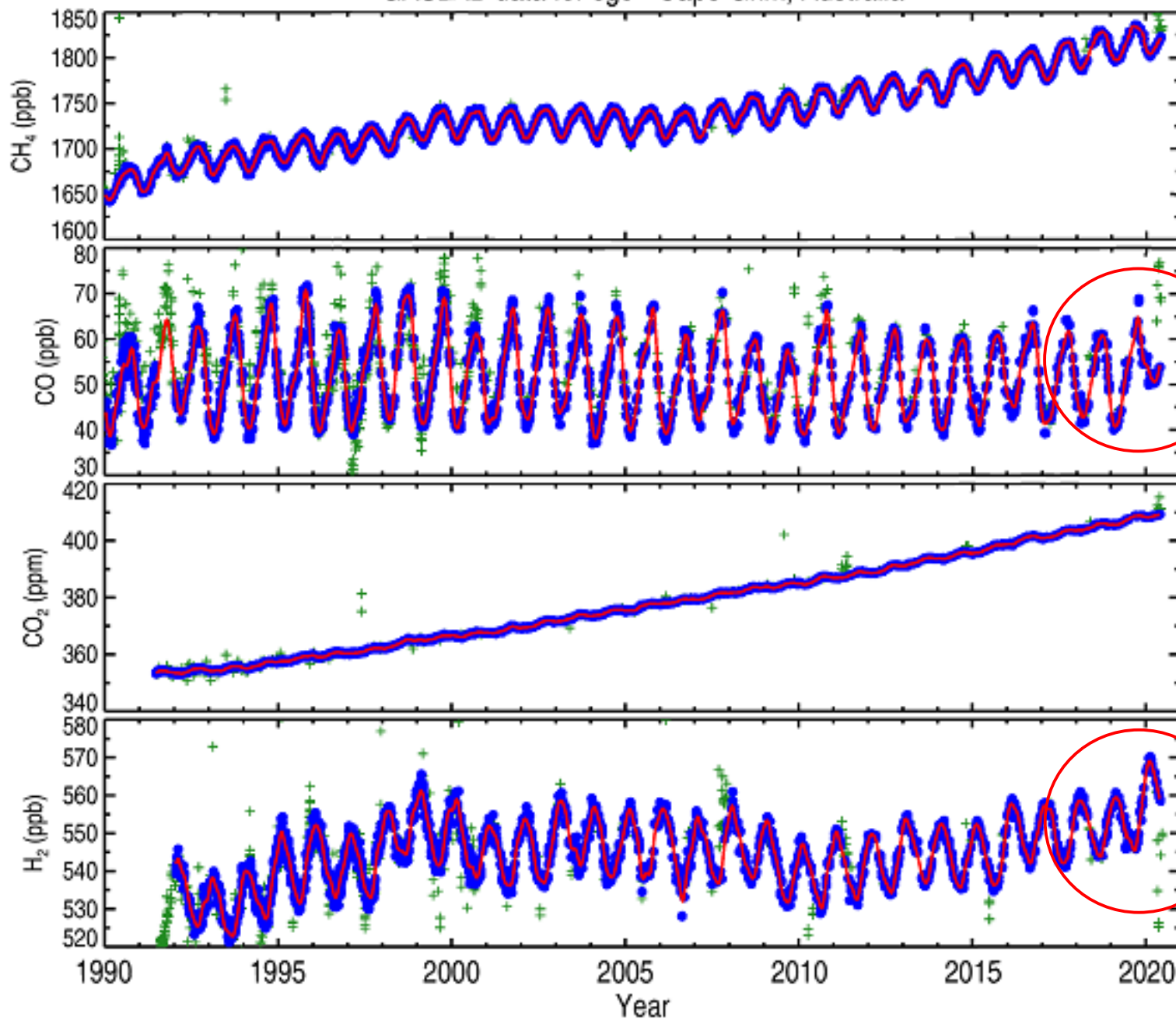
14/01/2020

04-05z





GASLAB data for cgo - Cape Grim, Australia



$\text{CH}_4$

CO

$\text{CO}_2$

$\text{H}_2$

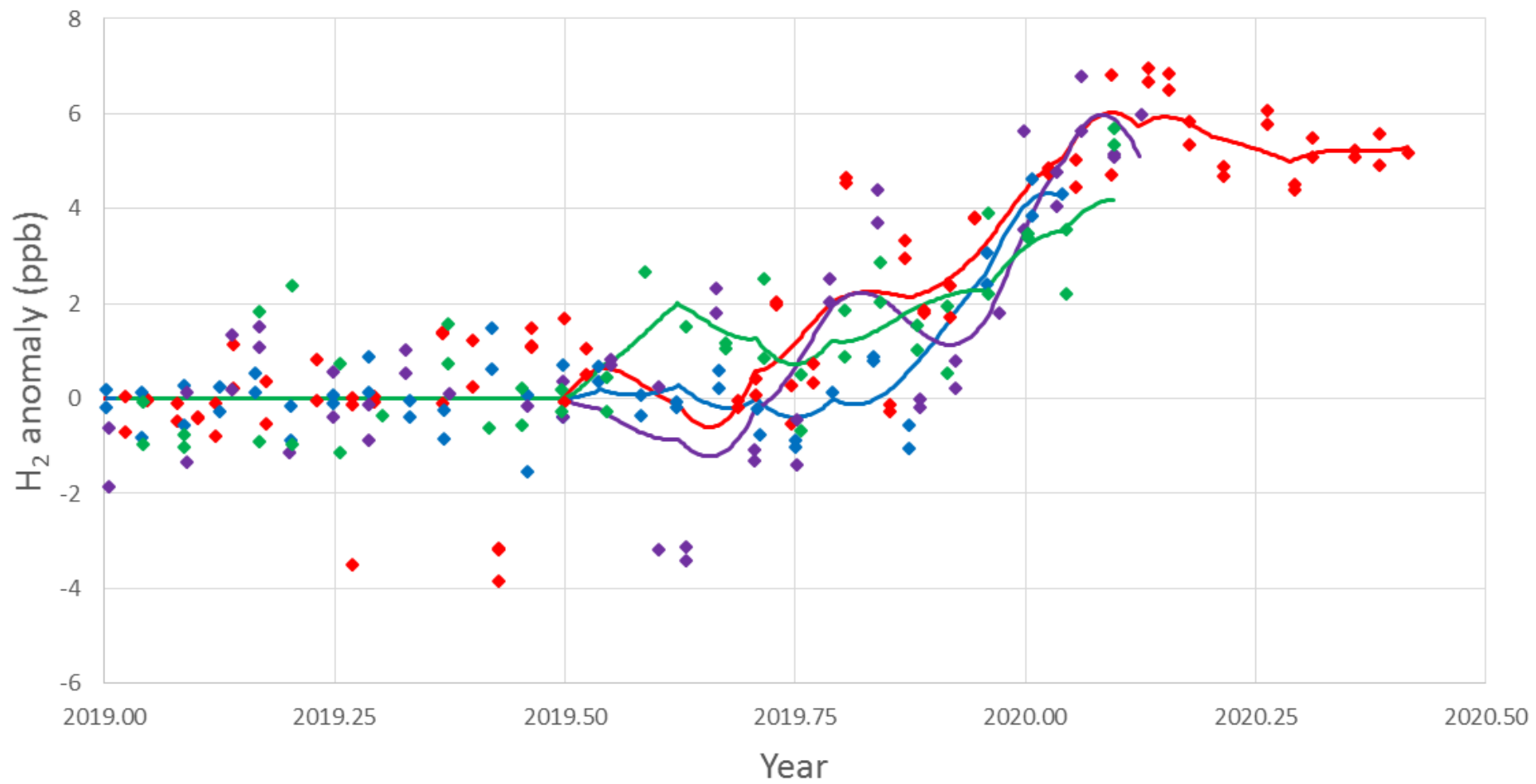


## SH emission anomalies for 2019/2020 (GFED)

Region	Type	Pg C	Total Pg C
Australia	temperate forest	0.14	0.18
	savanna/grasslands	0.04	
Equatorial Asia	tropical forest	0.04	0.12
	peat	0.07	
South America	savanna/grasslands	0.02	0.02
	tropical forest	0.00	
Africa	savanna/grasslands	-0.02	-0.02
	tropical forest	0.00	



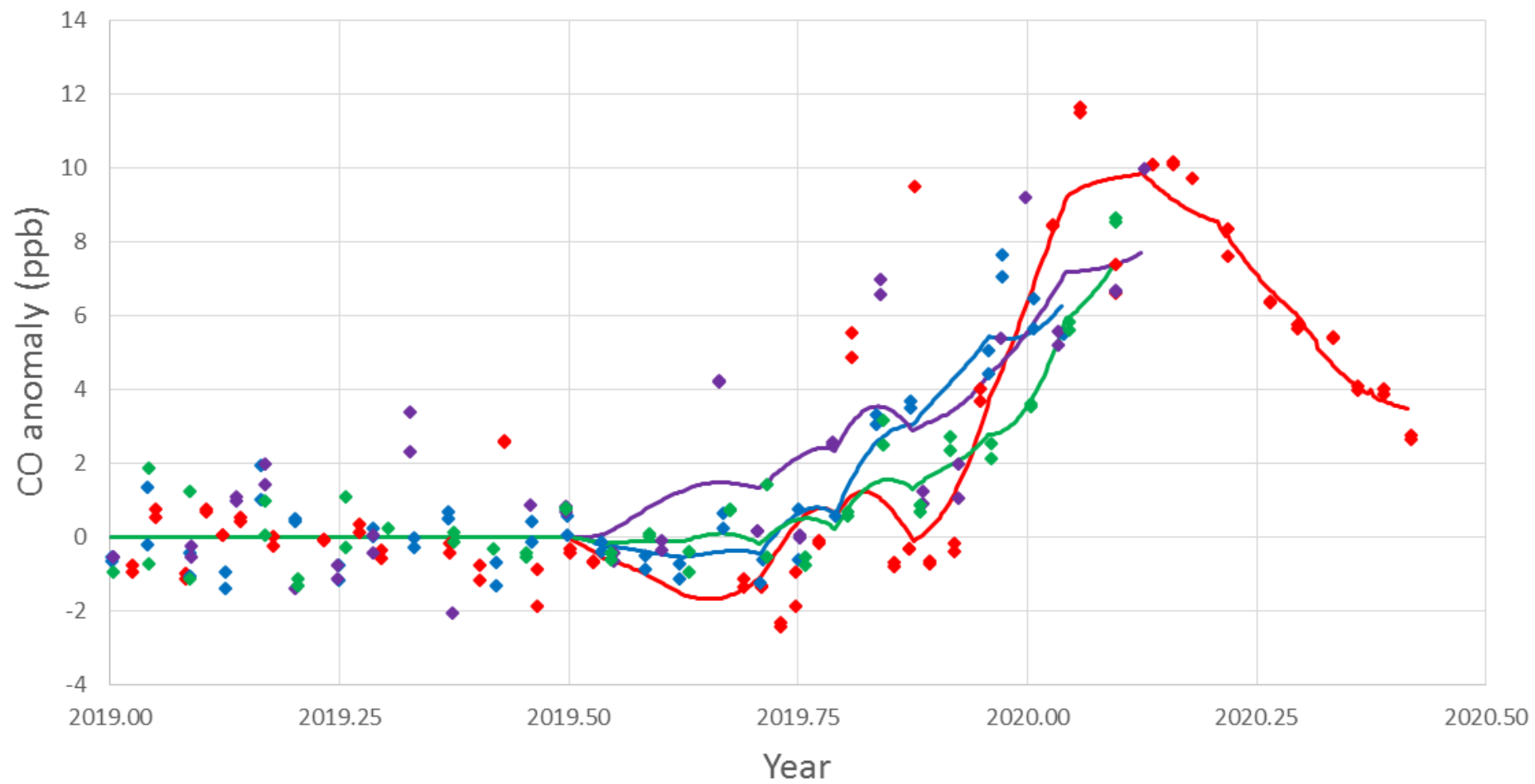
# H<sub>2</sub> anomaly in CSIRO flask data



- Cape Grim
- Macquarie Is.
- Mawson
- South Pole



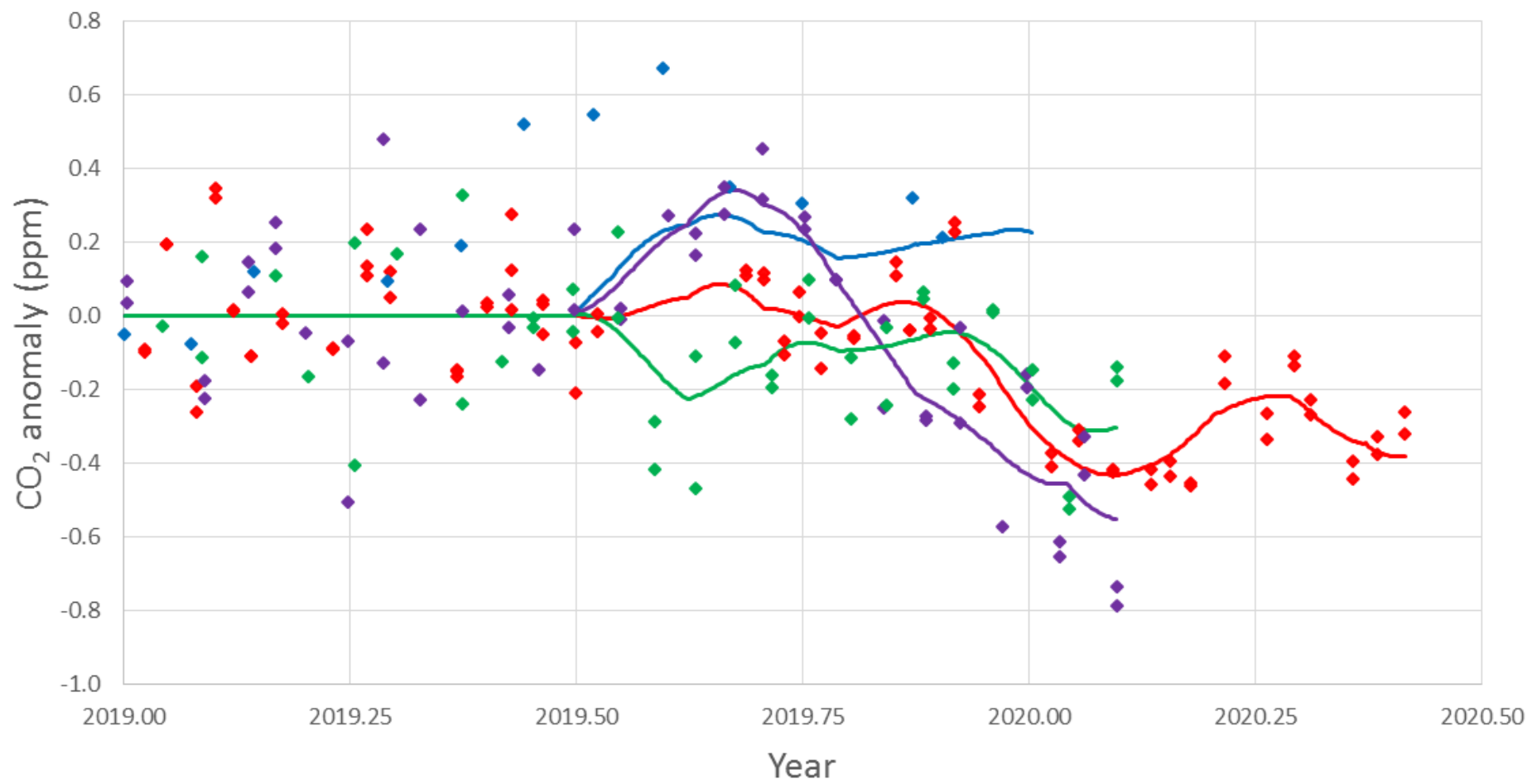
# CO anomaly in CSIRO flask data



- Cape Grim
- Macquarie Is.
- Mawson
- South Pole



# CO<sub>2</sub> anomaly in CSIRO flask data



- Cape Grim
- Macquarie Is.
- Mawson
- South Pole





## Signal resolution in background air

	<b>Anomaly at Cape Grim (ppb)</b>	<b>Uncertainty</b>	<b>Signal to noise</b>
CO	10	2.0	5.0
H <sub>2</sub>	6	2.2	2.7
CO <sub>2</sub>	220 (inferred)	300	0.7
CH <sub>4</sub>	1.2 (inferred)	2.4	0.5



# Top-down flux estimates

- \* **H<sub>2</sub> emitted to SH: 0.9 Tg H<sub>2</sub>**
- \* **Australian H<sub>2</sub> emissions: 0.6 Tg H<sub>2</sub> (cf. GFED 0.7 Tg H<sub>2</sub>)**
- \* **Australian carbon emissions: 0.15 Pg C (cf. GFED 0.18 Pg C)**



## Carbon emissions (in Pg C)

East Australian 2019/20 fires:	0.15
Other annual emissions:	
Australia temperate forest fires:	0.01
Australia all fires:	0.12
Global biomass burning:	2.1
Australian greenhouse gas emissions:	0.15 (CO <sub>2</sub> -e)



Thank you

**Climate Science Centre, CSIRO Oceans & Atmosphere**

Ray Langenfelds  
Experimental Scientist

+61 3 9239 4598  
[ray.langenfelds@csiro.au](mailto:ray.langenfelds@csiro.au)