

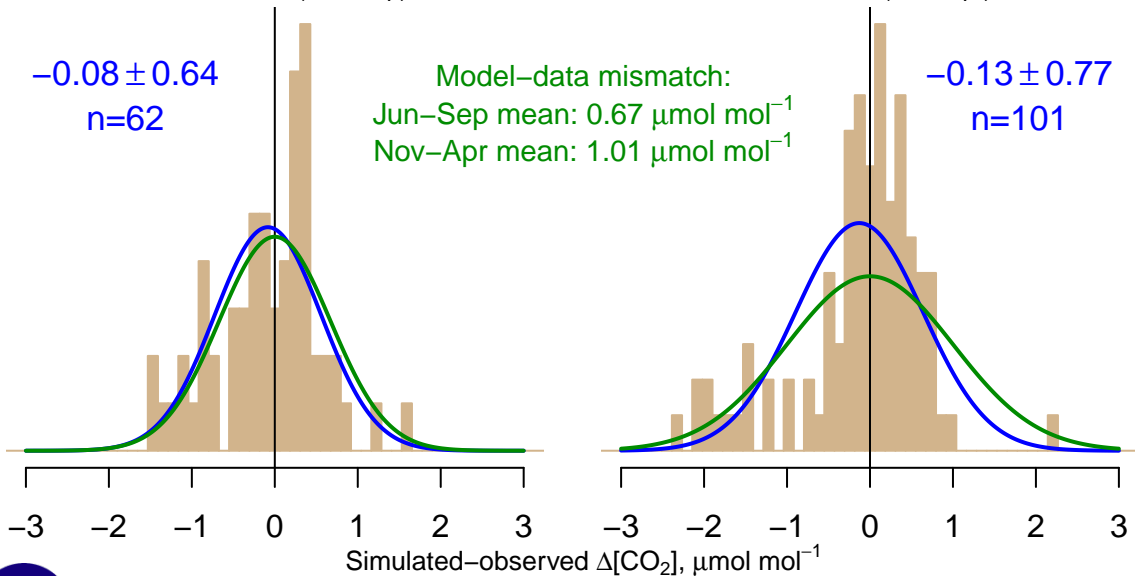
NH "Summer" (Jun–Sep)

$-0.08 \pm 0.64$   
 $n=62$

Model–data mismatch:  
Jun–Sep mean:  $0.67 \mu\text{mol mol}^{-1}$   
Nov–Apr mean:  $1.01 \mu\text{mol mol}^{-1}$

NH "Winter" (Nov–Apr)

$-0.13 \pm 0.77$   
 $n=101$



Data from 11–Feb–2010 to 19–Jan–2015

