

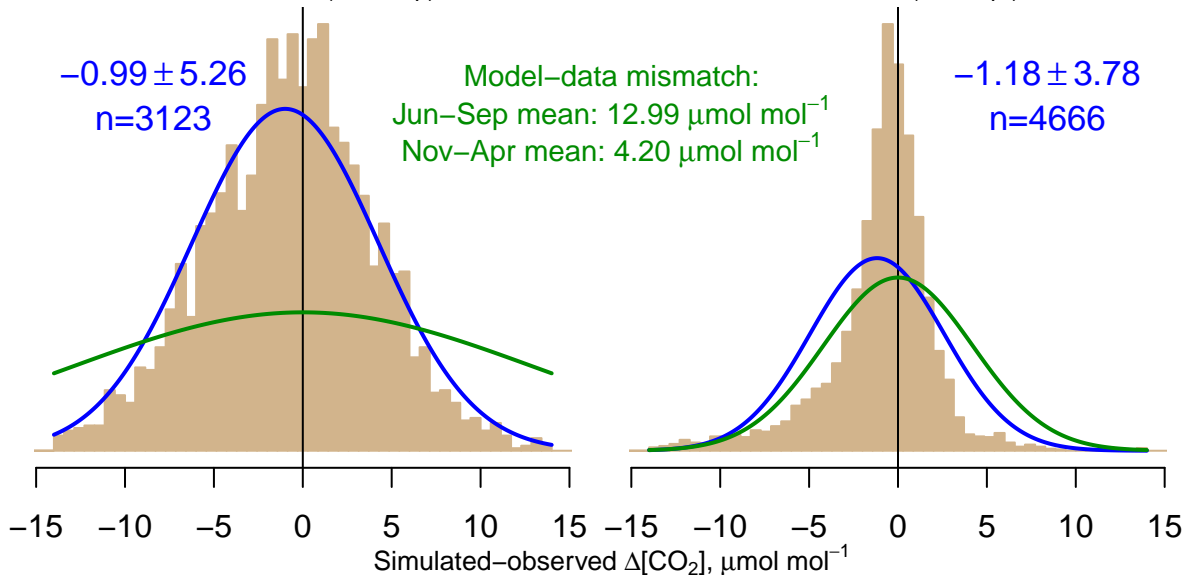
NH "Summer" (Jun–Sep)

-0.99 ± 5.26
 $n=3123$

Model–data mismatch:
Jun–Sep mean: $12.99 \mu\text{mol mol}^{-1}$
Nov–Apr mean: $4.20 \mu\text{mol mol}^{-1}$

NH "Winter" (Nov–Apr)

-1.18 ± 3.78
 $n=4666$



Data from 04–Mar–2005 to 23–Jan–2015