

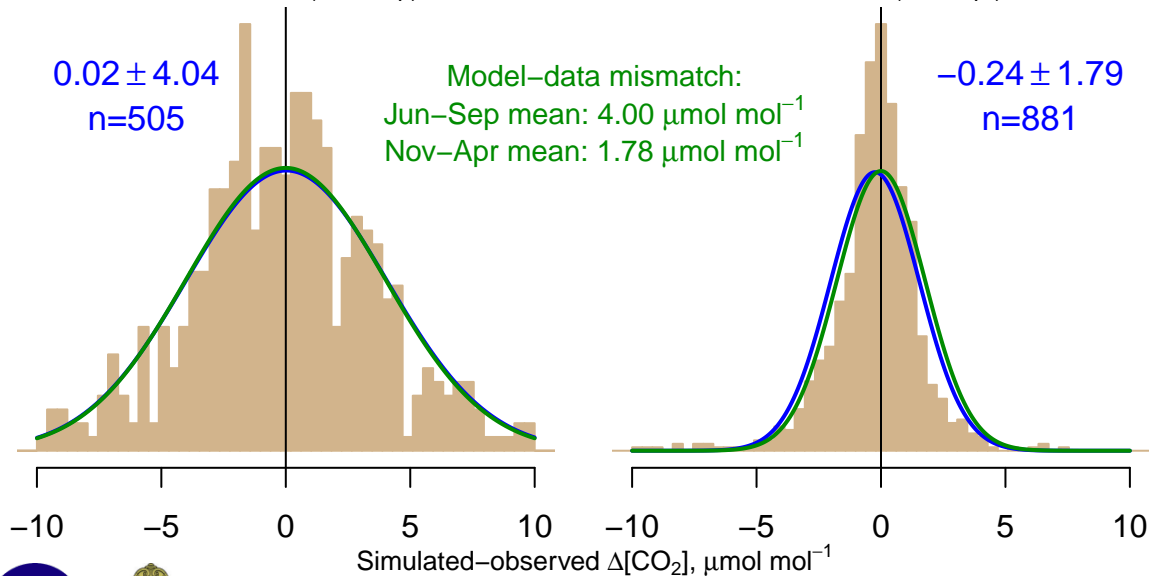
NH "Summer" (Jun–Sep)

$0.02 \pm 4.04$   
 $n=505$

Model–data mismatch:  
Jun–Sep mean:  $4.00 \mu\text{mol mol}^{-1}$   
Nov–Apr mean:  $1.78 \mu\text{mol mol}^{-1}$

NH "Winter" (Nov–Apr)

$-0.24 \pm 1.79$   
 $n=881$



Data from 07–Oct–2006 to 23–Jan–2015



WISCONSIN  
UNIVERSITY OF WISCONSIN-MADISON