

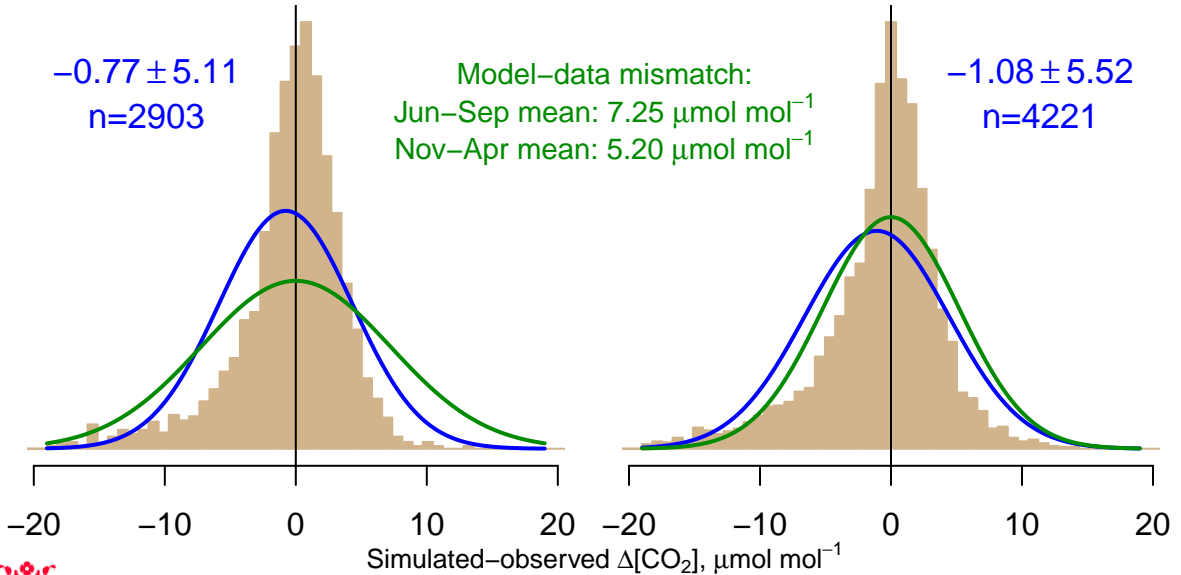
NH "Summer" (Jun–Sep)

-0.77 ± 5.11
 $n=2903$

Model–data mismatch:
Jun–Sep mean: $7.25 \mu\text{mol mol}^{-1}$
Nov–Apr mean: $5.20 \mu\text{mol mol}^{-1}$

NH "Winter" (Nov–Apr)

-1.08 ± 5.52
 $n=4221$



Data from 17–May–2006 to 31–Dec–2014



university of
 groningen

co2_lut_surface-insitu_44_allvalid
CT2015, created 15–Mar–2016 22:14