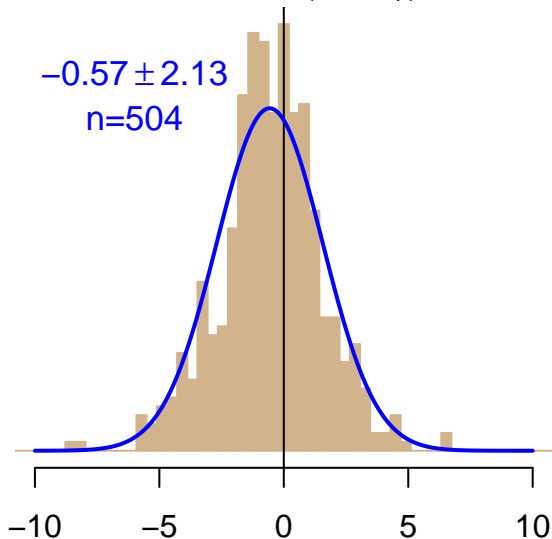


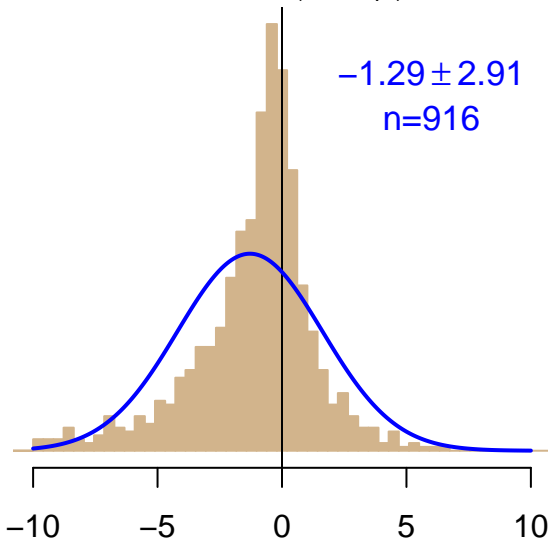
NH "Summer" (Jun–Sep)

$-0.57 \pm 2.13$   
 $n=504$



NH "Winter" (Nov–Apr)

$-1.29 \pm 2.91$   
 $n=916$



Simulated–observed  $\Delta[\text{CO}_2]$ ,  $\mu\text{mol mol}^{-1}$

Data from 08–Oct–2007 to 23–Jan–2015

