

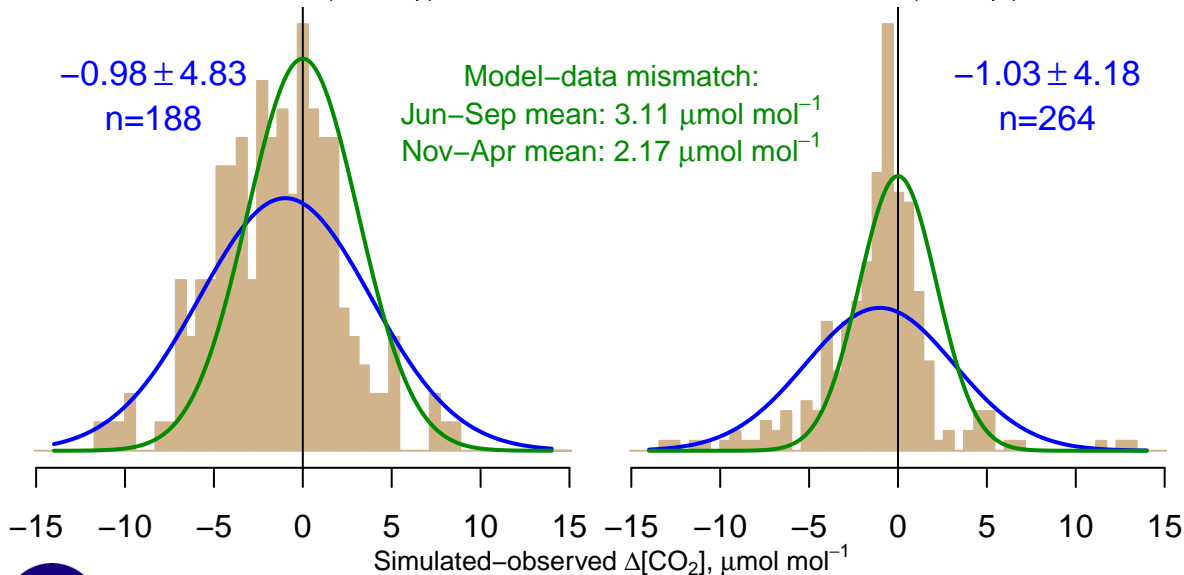
NH "Summer" (Jun–Sep)

-0.98 ± 4.83
 $n=188$

Model–data mismatch:
Jun–Sep mean: $3.11 \mu\text{mol mol}^{-1}$
Nov–Apr mean: $2.17 \mu\text{mol mol}^{-1}$

NH "Winter" (Nov–Apr)

-1.03 ± 4.18
 $n=264$



Simulated–observed $\Delta[\text{CO}_2]$, $\mu\text{mol mol}^{-1}$

Data from 19–Apr–2002 to 22–Jan–2015

