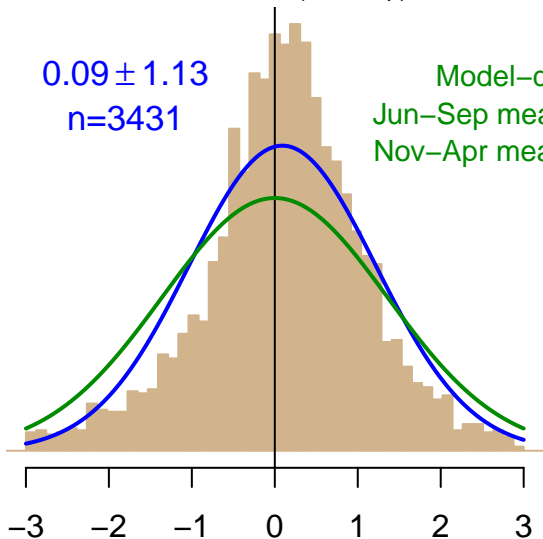


NH "Summer" (Jun–Sep)

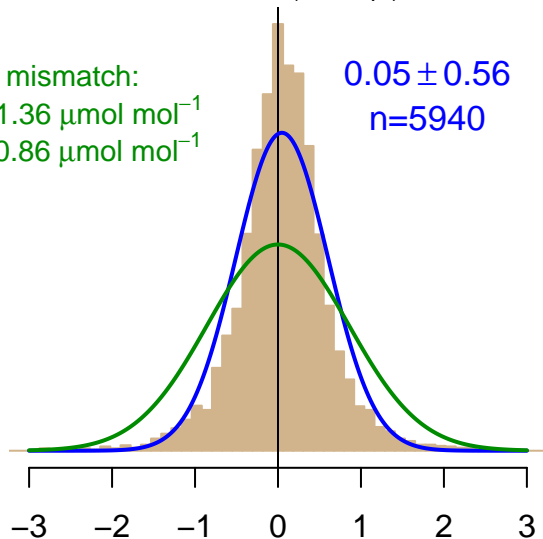
0.09 ± 1.13
 $n=3431$

Model–data mismatch:
Jun–Sep mean: $1.36 \mu\text{mol mol}^{-1}$
Nov–Apr mean: $0.86 \mu\text{mol mol}^{-1}$



NH "Winter" (Nov–Apr)

0.05 ± 0.56
 $n=5940$



Simulated–observed $\Delta[\text{CO}_2]$, $\mu\text{mol mol}^{-1}$

Data from 03–Jan–2001 to 28–Dec–2015

