

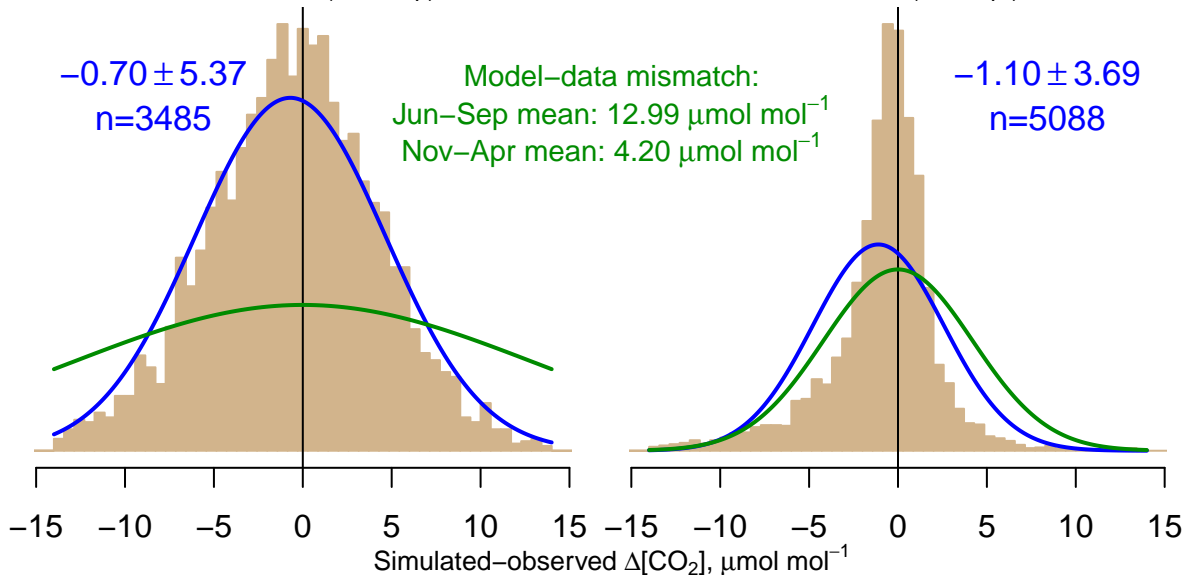
NH "Summer" (Jun–Sep)

-0.70 ± 5.37
 $n=3485$

Model–data mismatch:
Jun–Sep mean: $12.99 \mu\text{mol mol}^{-1}$
Nov–Apr mean: $4.20 \mu\text{mol mol}^{-1}$

NH "Winter" (Nov–Apr)

-1.10 ± 3.69
 $n=5088$



Data from 04–Mar–2005 to 29–Dec–2015