

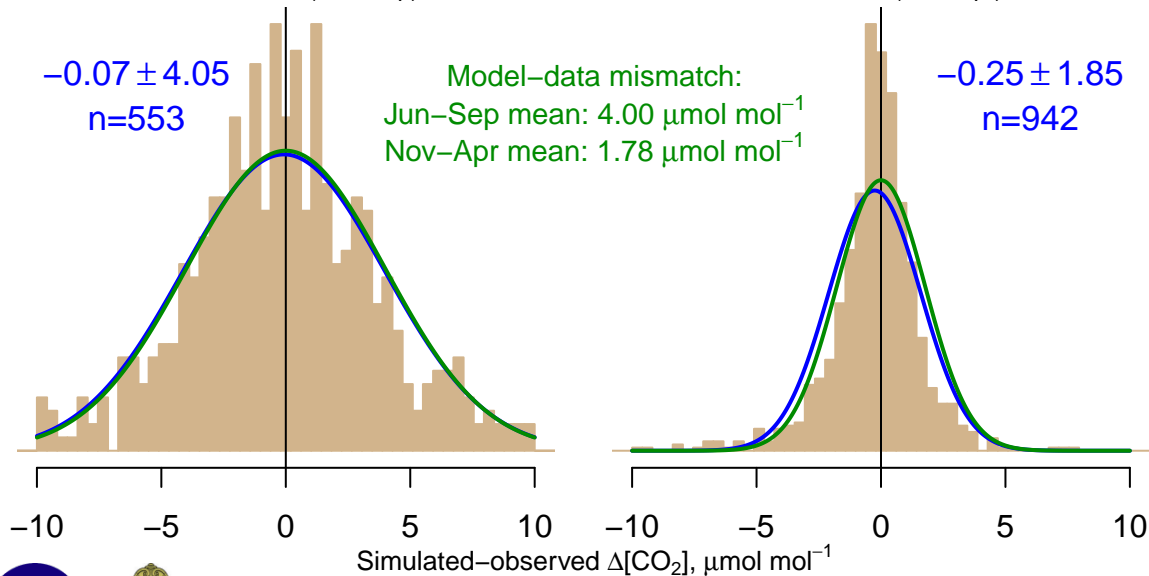
NH "Summer" (Jun–Sep)

$-0.07 \pm 4.05$   
 $n=553$

Model–data mismatch:  
Jun–Sep mean:  $4.00 \mu\text{mol mol}^{-1}$   
Nov–Apr mean:  $1.78 \mu\text{mol mol}^{-1}$

NH "Winter" (Nov–Apr)

$-0.25 \pm 1.85$   
 $n=942$



Simulated–observed  $\Delta[\text{CO}_2]$ ,  $\mu\text{mol mol}^{-1}$

Data from 07–Oct–2006 to 29–Dec–2015



WISCONSIN  
UNIVERSITY OF WISCONSIN-MADISON