

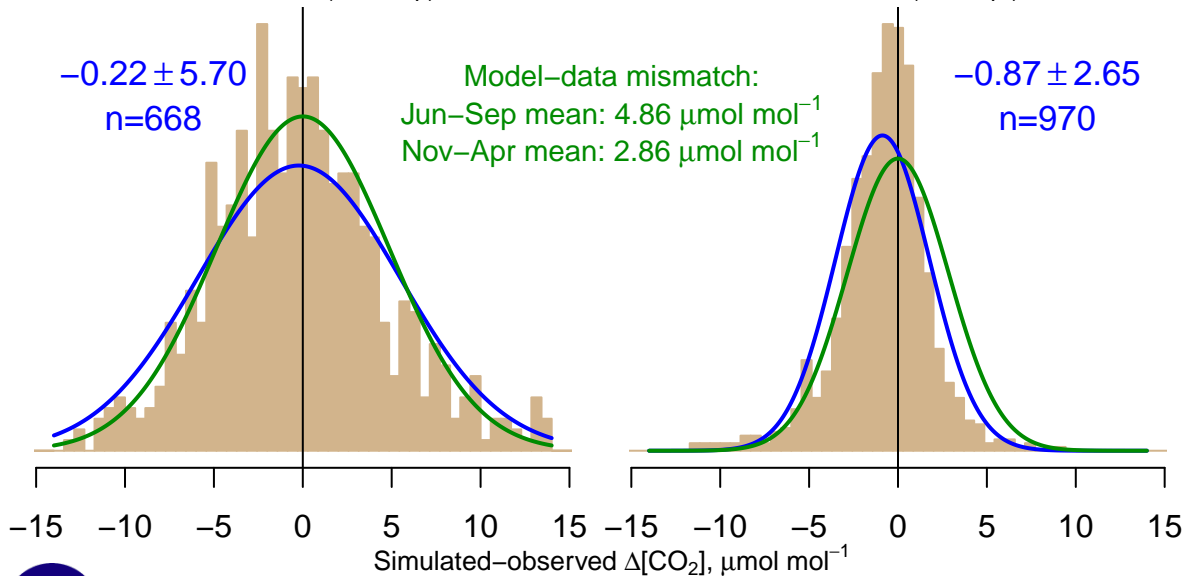
NH "Summer" (Jun–Sep)

$-0.22 \pm 5.70$   
 $n=668$

Model–data mismatch:  
Jun–Sep mean:  $4.86 \mu\text{mol mol}^{-1}$   
Nov–Apr mean:  $2.86 \mu\text{mol mol}^{-1}$

NH "Winter" (Nov–Apr)

$-0.87 \pm 2.65$   
 $n=970$



Data from 29–Jun–2007 to 29–Dec–2015

