

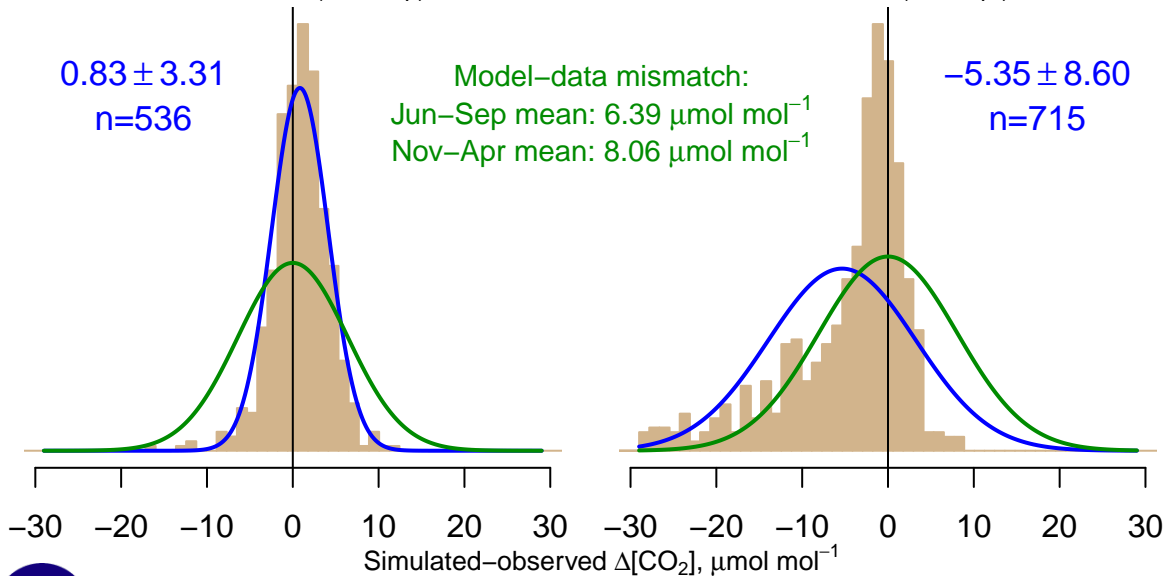
NH "Summer" (Jun–Sep)

0.83 ± 3.31
 $n=536$

NH "Winter" (Nov–Apr)

-5.35 ± 8.60
 $n=715$

Model–data mismatch:
Jun–Sep mean: $6.39 \mu\text{mol mol}^{-1}$
Nov–Apr mean: $8.06 \mu\text{mol mol}^{-1}$



Data from 01–Oct–2007 to 28–Dec–2015

