

NH "Summer" (Jun–Sep)

2.93 ± 5.31
 $n=3489$

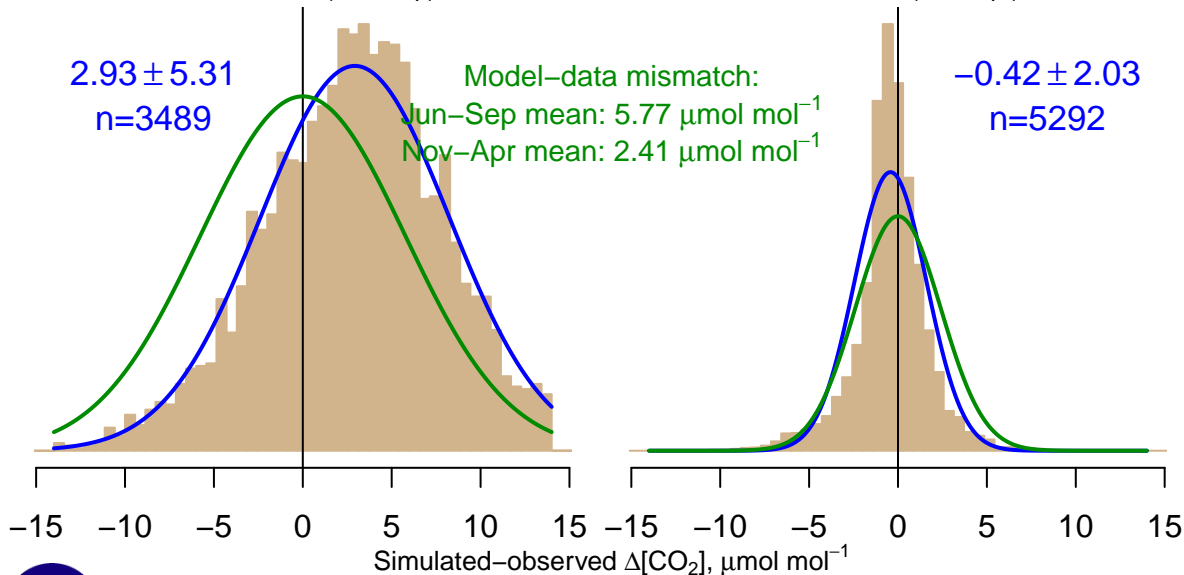
Model–data mismatch:

Jun–Sep mean: $5.77 \mu\text{mol mol}^{-1}$

Nov–Apr mean: $2.41 \mu\text{mol mol}^{-1}$

NH "Winter" (Nov–Apr)

-0.42 ± 2.03
 $n=5292$



Data from 13–Feb–2009 to 31–Mar–2017



co2_amt_tower-insitu_1_allvalid-30magl
CT2017, created 22–Jul–2019 16:32