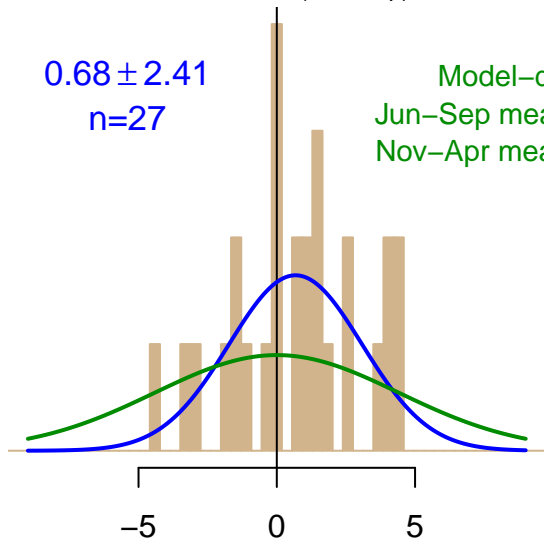


NH "Summer" (Jun–Sep)

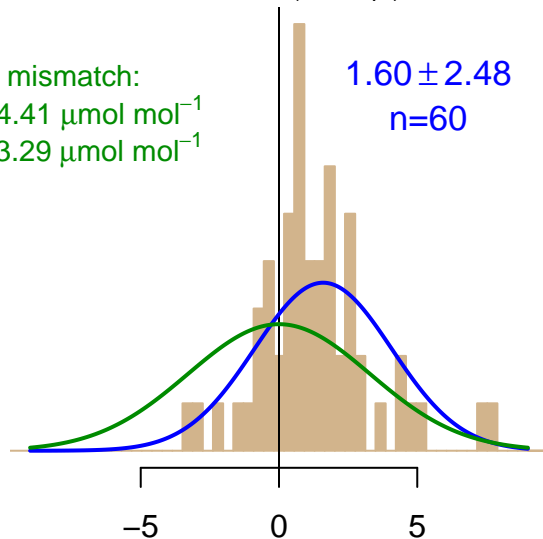
0.68 ± 2.41
 $n=27$

Model–data mismatch:
Jun–Sep mean: $4.41 \mu\text{mol mol}^{-1}$
Nov–Apr mean: $3.29 \mu\text{mol mol}^{-1}$



NH "Winter" (Nov–Apr)

1.60 ± 2.48
 $n=60$



Simulated–observed $\Delta[\text{CO}_2]$, $\mu\text{mol mol}^{-1}$

Data from 20–Jan–2001 to 07–Mar–2009

