

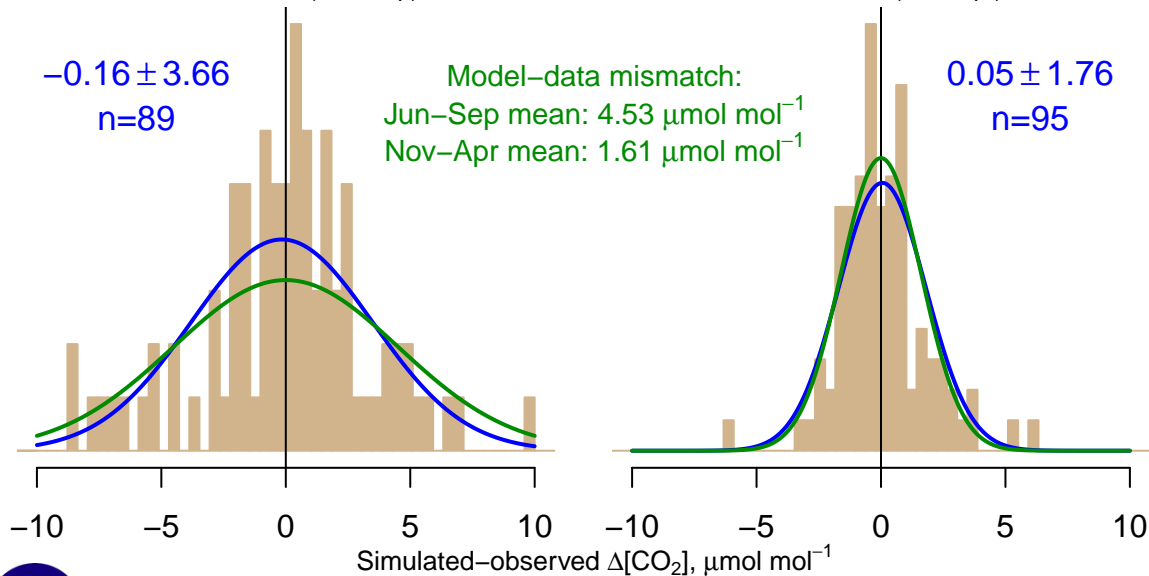
NH "Summer" (Jun–Sep)

$-0.16 \pm 3.66$   
n=89

Model–data mismatch:  
Jun–Sep mean:  $4.53 \mu\text{mol mol}^{-1}$   
Nov–Apr mean:  $1.61 \mu\text{mol mol}^{-1}$

NH "Winter" (Nov–Apr)

$0.05 \pm 1.76$   
n=95



Data from 02–Oct–2004 to 17–Apr–2011

co2\_bne\_aircraft–pfp\_1\_allvalid\_1000–2000masl  
CT2017, created 22–Jul–2019 16:35

