

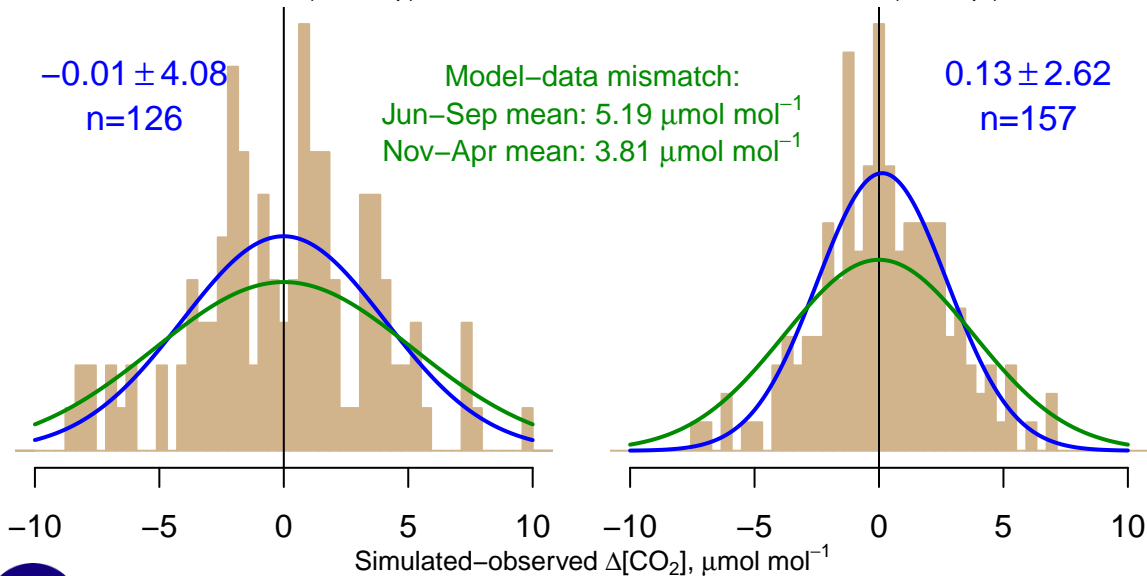
NH "Summer" (Jun–Sep)

-0.01 ± 4.08
 $n=126$

Model–data mismatch:
Jun–Sep mean: $5.19 \mu\text{mol mol}^{-1}$
Nov–Apr mean: $3.81 \mu\text{mol mol}^{-1}$

NH "Winter" (Nov–Apr)

0.13 ± 2.62
 $n=157$



Data from 05–May–2009 to 20–Mar–2017

