

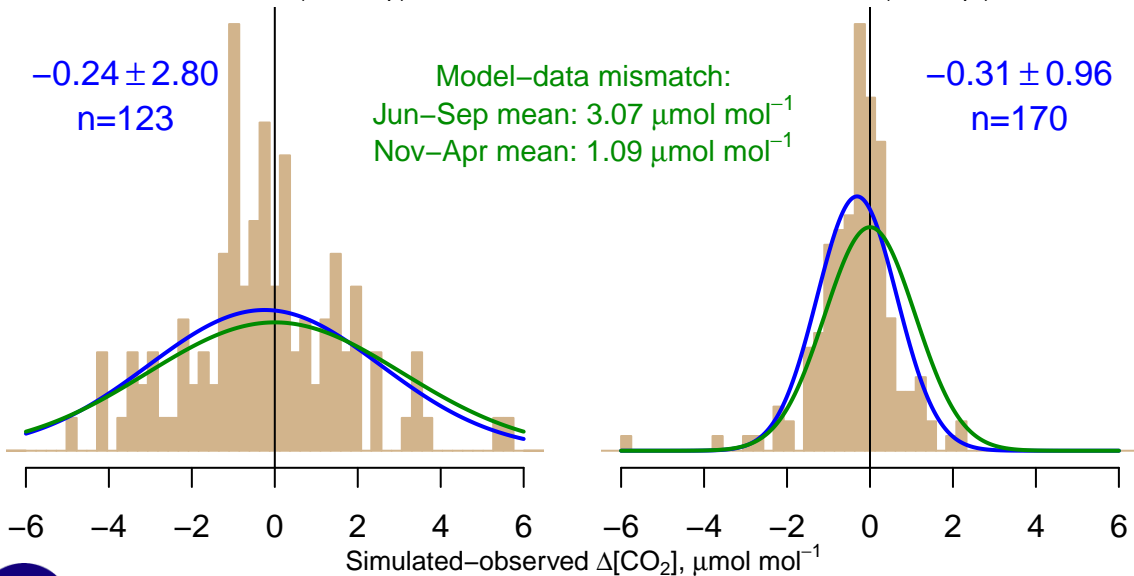
NH "Summer" (Jun–Sep)

-0.24 ± 2.80
 $n=123$

Model–data mismatch:
Jun–Sep mean: $3.07 \mu\text{mol mol}^{-1}$
Nov–Apr mean: $1.09 \mu\text{mol mol}^{-1}$

NH "Winter" (Nov–Apr)

-0.31 ± 0.96
 $n=170$



Data from 21–Sep–2004 to 15–Nov–2016

