

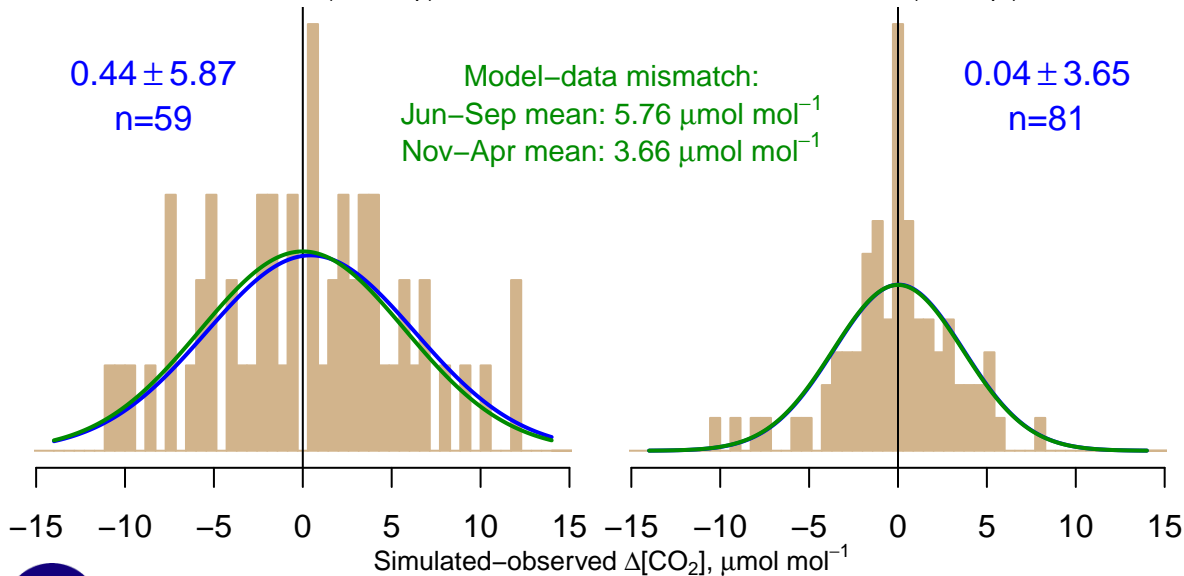
NH "Summer" (Jun–Sep)

0.44 ± 5.87
 $n=59$

Model–data mismatch:
Jun–Sep mean: $5.76 \mu\text{mol mol}^{-1}$
Nov–Apr mean: $3.66 \mu\text{mol mol}^{-1}$

NH "Winter" (Nov–Apr)

0.04 ± 3.65
 $n=81$



Data from 07–Nov–2004 to 17–Mar–2016



co2_hil_aircraft-pfp_1_allvalid_0–1000masl
CT2017, created 22–Jul–2019 16:51