

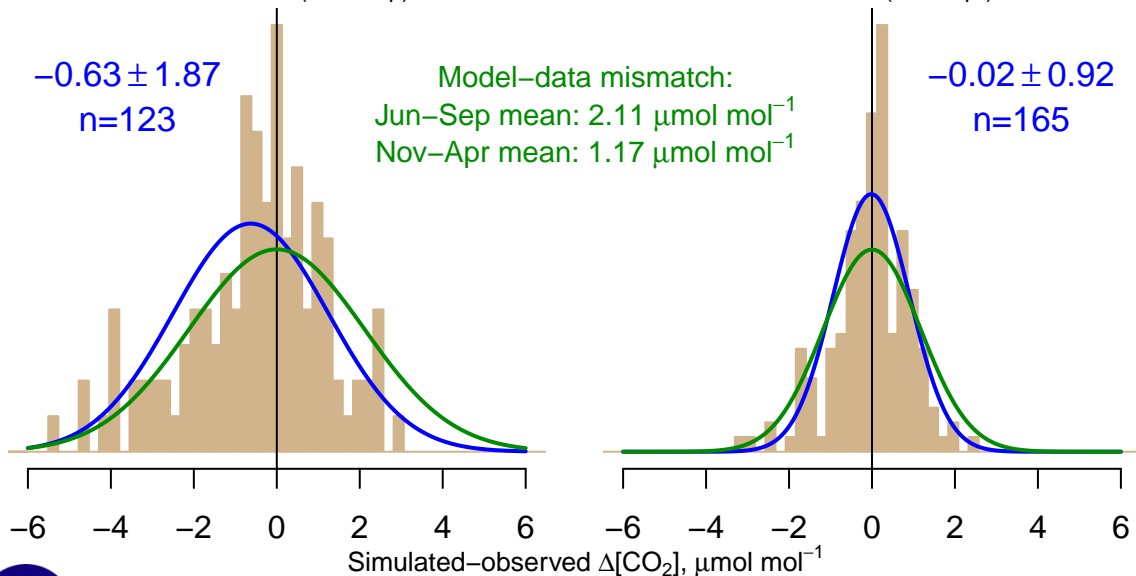
NH "Summer" (Jun–Sep)

$-0.63 \pm 1.87$   
 $n=123$

Model–data mismatch:  
Jun–Sep mean:  $2.11 \mu\text{mol mol}^{-1}$   
Nov–Apr mean:  $1.17 \mu\text{mol mol}^{-1}$

NH "Winter" (Nov–Apr)

$-0.02 \pm 0.92$   
 $n=165$



Data from 02–Oct–2004 to 17–Mar–2016

co2\_hil\_aircraft-pfp\_1\_allvalid\_3000–4000masl  
CT2017, created 22–Jul–2019 16:51

