

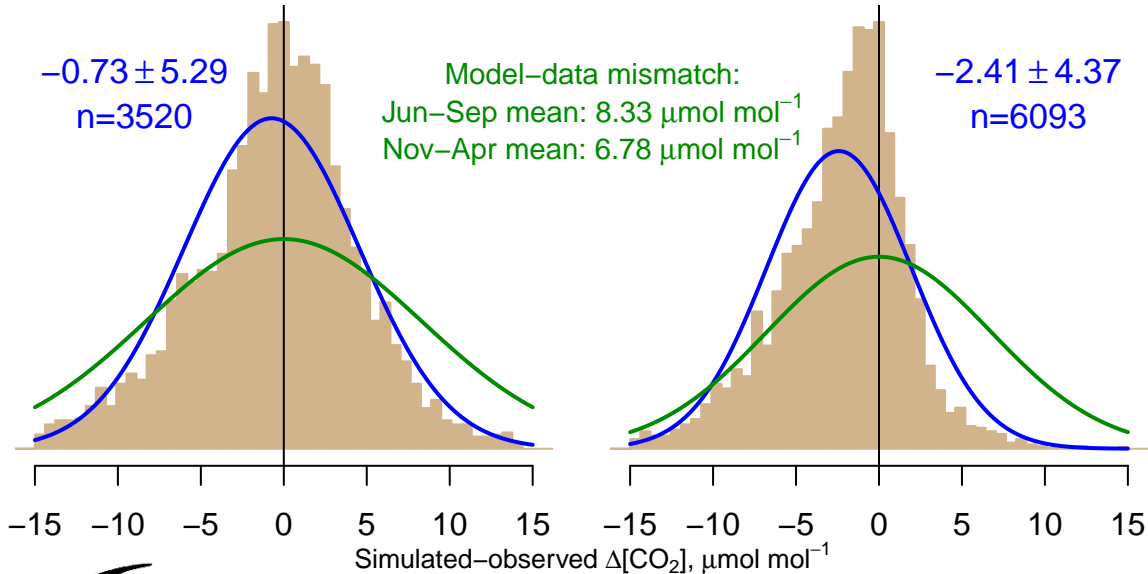
NH "Summer" (Jun–Sep)

-0.73 ± 5.29
 $n=3520$

Model–data mismatch:
Jun–Sep mean: $8.33 \mu\text{mol mol}^{-1}$
Nov–Apr mean: $6.78 \mu\text{mol mol}^{-1}$

NH "Winter" (Nov–Apr)

-2.41 ± 4.37
 $n=6093$



Data from 05–Sep–2004 to 28–Jul–2013



co2_igr_tower-insitu_20_allvalid-24magl
CT2017, created 22–Jul–2019 16:53