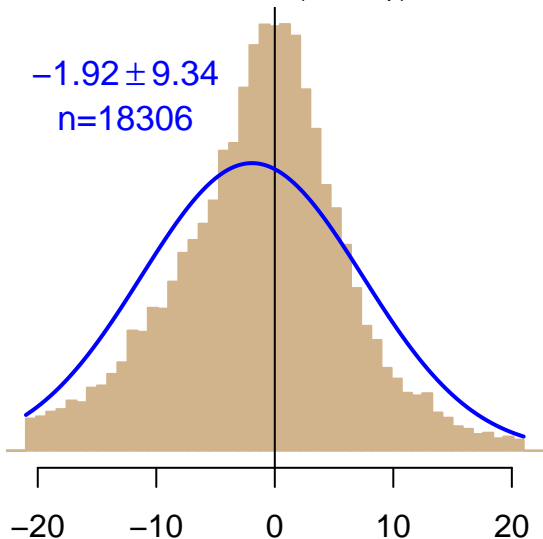


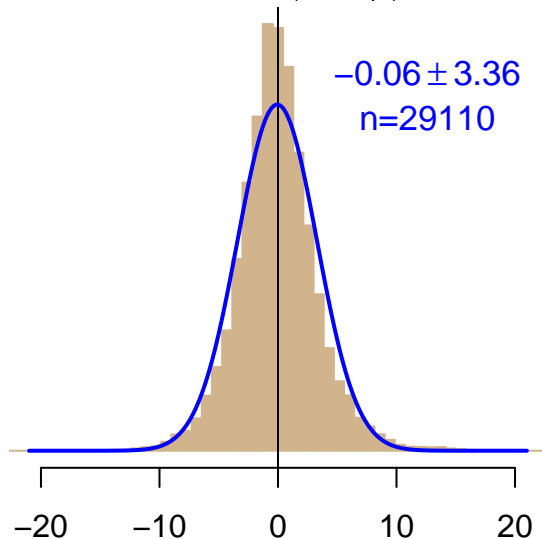
NH "Summer" (Jun–Sep)

$-1.92 \pm 9.34$   
 $n=18306$



NH "Winter" (Nov–Apr)

$-0.06 \pm 3.36$   
 $n=29110$



Simulated–observed  $\Delta[\text{CO}_2]$ ,  $\mu\text{mol mol}^{-1}$

Data from 11–Jun–2004 to 31–Dec–2016

