

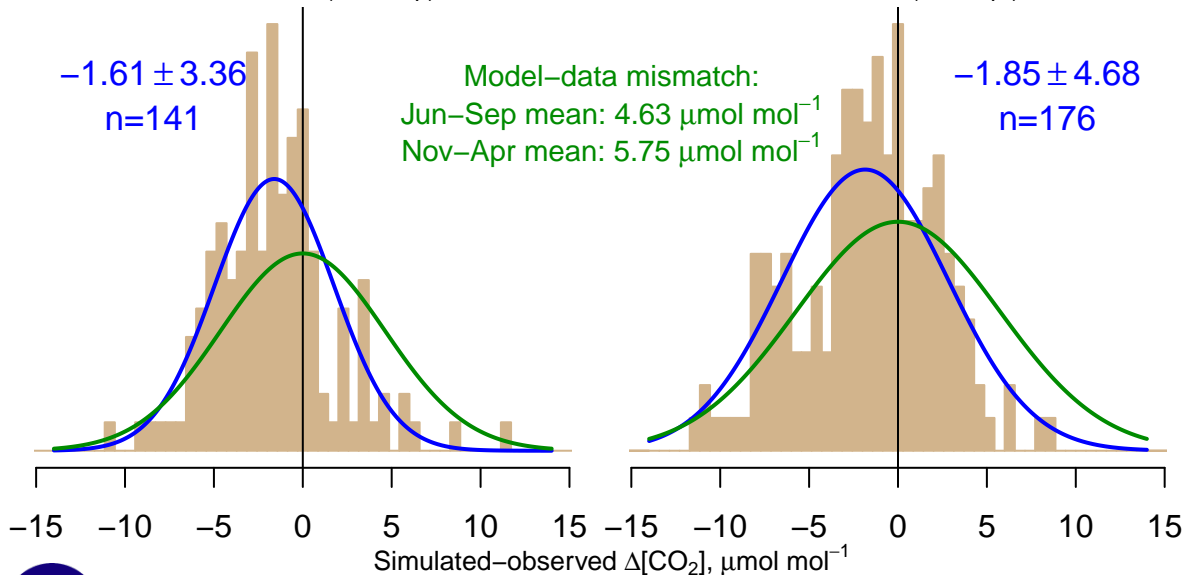
NH "Summer" (Jun–Sep)

-1.61 ± 3.36
 $n=141$

Model–data mismatch:
Jun–Sep mean: $4.63 \mu\text{mol mol}^{-1}$
Nov–Apr mean: $5.75 \mu\text{mol mol}^{-1}$

NH "Winter" (Nov–Apr)

-1.85 ± 4.68
 $n=176$



Data from 06–Jan–2001 to 15–Aug–2009

