

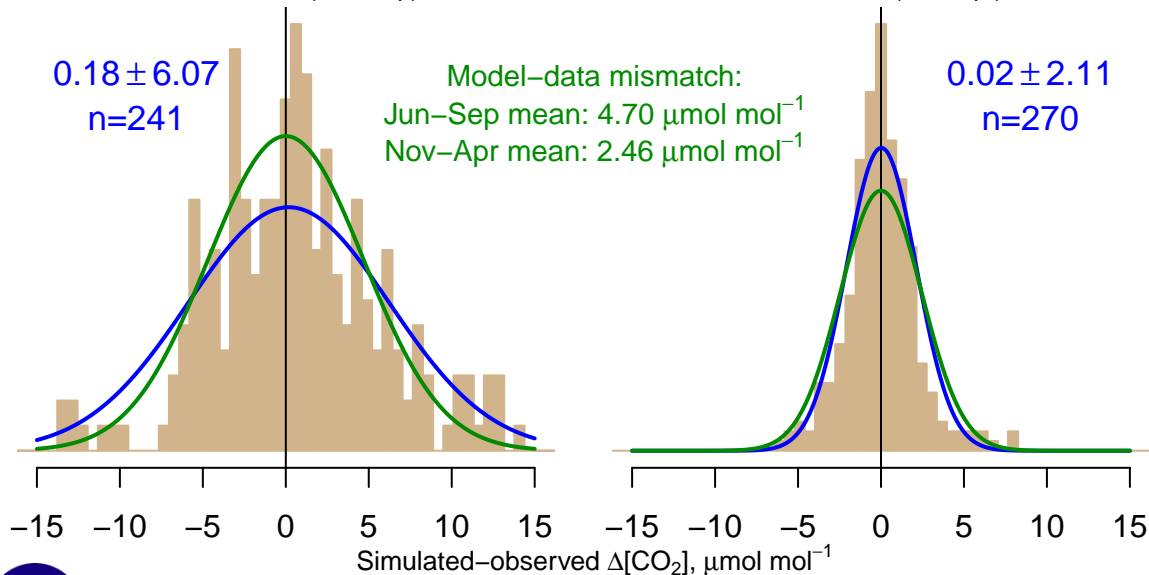
NH "Summer" (Jun–Sep)

0.18 ± 6.07
 $n=241$

Model–data mismatch:
Jun–Sep mean: $4.70 \mu\text{mol mol}^{-1}$
Nov–Apr mean: $2.46 \mu\text{mol mol}^{-1}$

NH "Winter" (Nov–Apr)

0.02 ± 2.11
 $n=270$



Data from 24–Aug–2002 to 26–Nov–2016



co2_lef_aircraft-pfp_1_allvalid_0–1000masl
CT2017, created 22–Jul–2019 16:56