

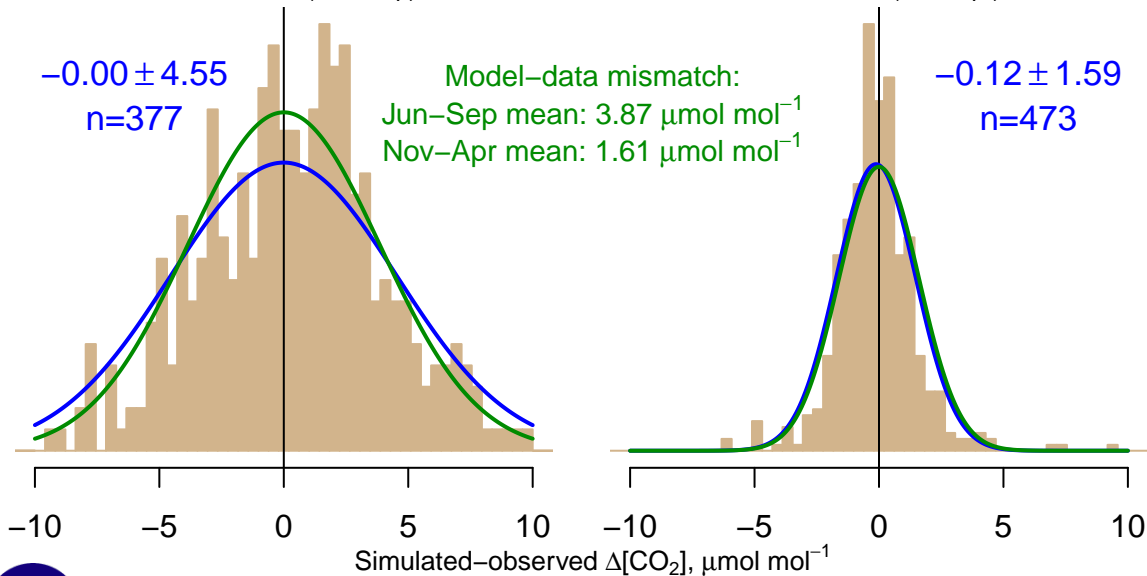
NH "Summer" (Jun–Sep)

$-0.00 \pm 4.55$   
 $n=377$

Model–data mismatch:  
Jun–Sep mean:  $3.87 \mu\text{mol mol}^{-1}$   
Nov–Apr mean:  $1.61 \mu\text{mol mol}^{-1}$

NH "Winter" (Nov–Apr)

$-0.12 \pm 1.59$   
 $n=473$



Data from 24–Aug–2002 to 26–Nov–2016

co2\_lef\_aircraft-pfp\_1\_allvalid\_1000–2000masl  
CT2017, created 22–Jul–2019 16:56

