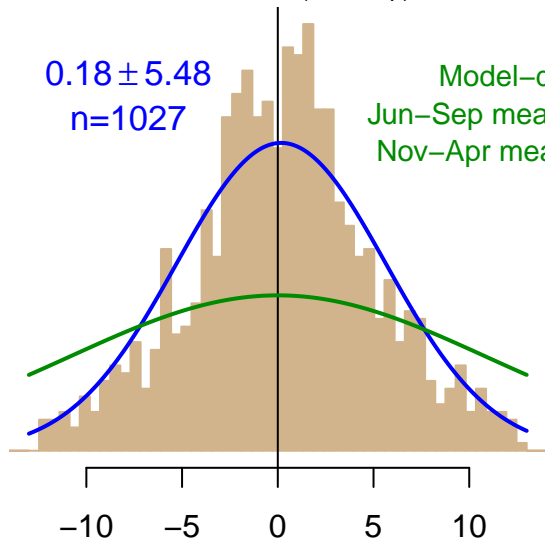


NH "Summer" (Jun–Sep)

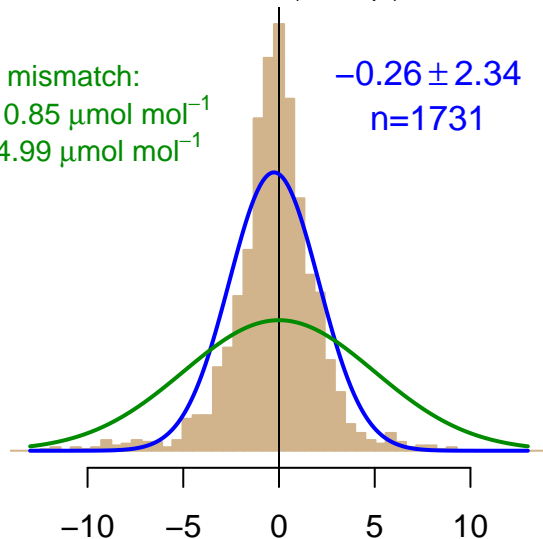
0.18 ± 5.48
 $n=1027$

Model–data mismatch:
Jun–Sep mean: $10.85 \mu\text{mol mol}^{-1}$
Nov–Apr mean: $4.99 \mu\text{mol mol}^{-1}$



NH "Winter" (Nov–Apr)

-0.26 ± 2.34
 $n=1731$



Simulated–observed $\Delta[\text{CO}_2]$, $\mu\text{mol mol}^{-1}$

Data from 07–Oct–2006 to 30–Mar–2017



WISCONSIN
UNIVERSITY OF WISCONSIN-MADISON