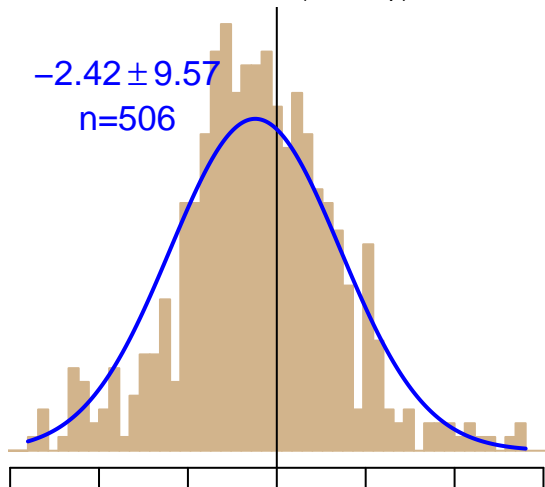


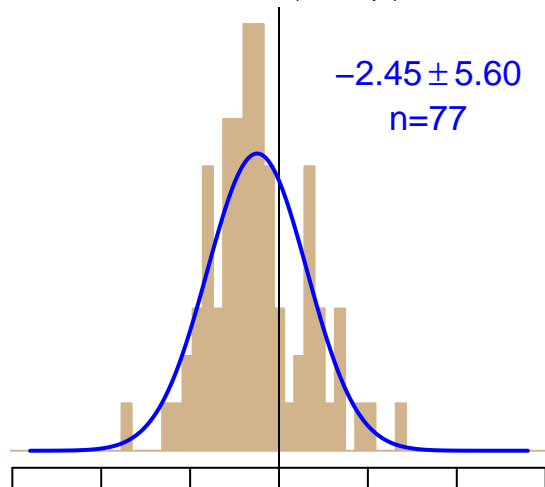
NH "Summer" (Jun–Sep)

-2.42 ± 9.57
 $n=506$



NH "Winter" (Nov–Apr)

-2.45 ± 5.60
 $n=77$



Simulated–observed $\Delta[\text{CO}_2]$, $\mu\text{mol mol}^{-1}$

Data from 01–Aug–2003 to 23–May–2009



WISCONSIN
UNIVERSITY OF WISCONSIN-MADISON

co2_lef_tower-insitu_1_allvalid-244magl
CT2017, created 22-Jul-2019 16:56