

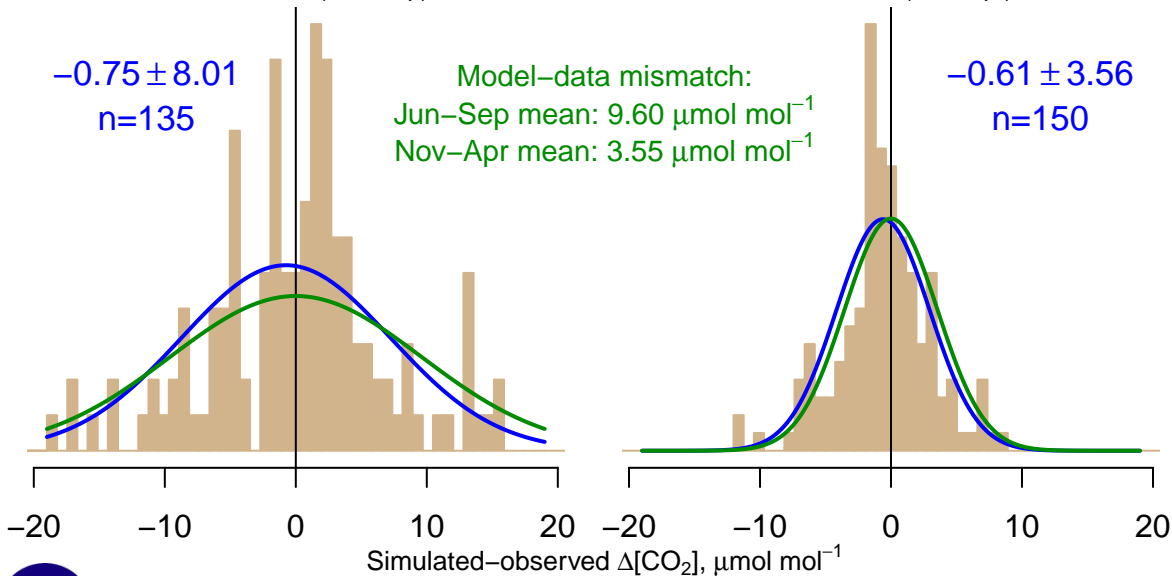
NH "Summer" (Jun–Sep)

-0.75 ± 8.01
 $n=135$

Model–data mismatch:
Jun–Sep mean: $9.60 \mu\text{mol mol}^{-1}$
Nov–Apr mean: $3.55 \mu\text{mol mol}^{-1}$

NH "Winter" (Nov–Apr)

-0.61 ± 3.56
 $n=150$



Data from 03–Jun–2013 to 31–Mar–2017

