

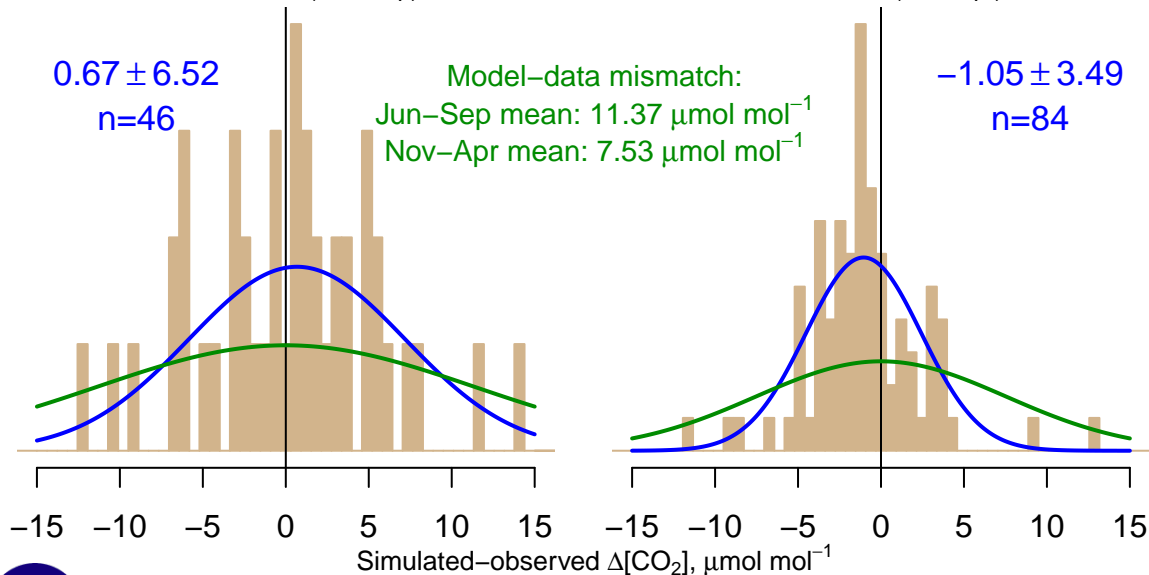
NH "Summer" (Jun–Sep)

0.67 ± 6.52
 $n=46$

Model–data mismatch:
Jun–Sep mean: $11.37 \mu\text{mol mol}^{-1}$
Nov–Apr mean: $7.53 \mu\text{mol mol}^{-1}$

NH "Winter" (Nov–Apr)

-1.05 ± 3.49
 $n=84$



Data from 30–Jan–2008 to 26–Jan–2013

