

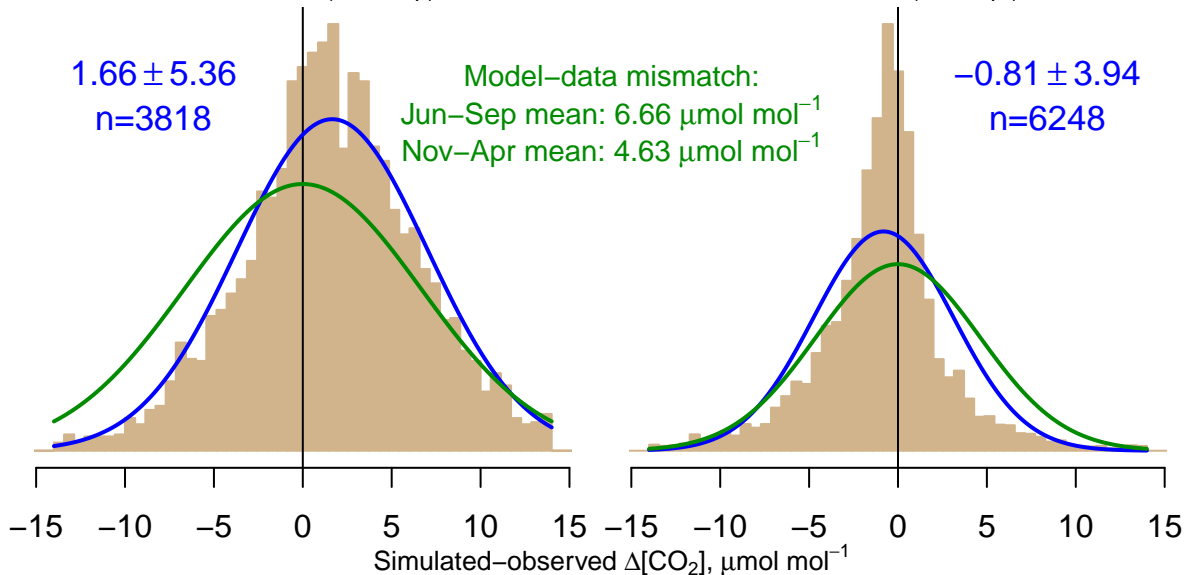
NH "Summer" (Jun–Sep)

NH "Winter" (Nov–Apr)

1.66 ± 5.36
 $n=3818$

Model–data mismatch:
Jun–Sep mean: $6.66 \mu\text{mol mol}^{-1}$
Nov–Apr mean: $4.63 \mu\text{mol mol}^{-1}$

-0.81 ± 3.94
 $n=6248$



Data from 19–Apr–2007 to 12–Mar–2017