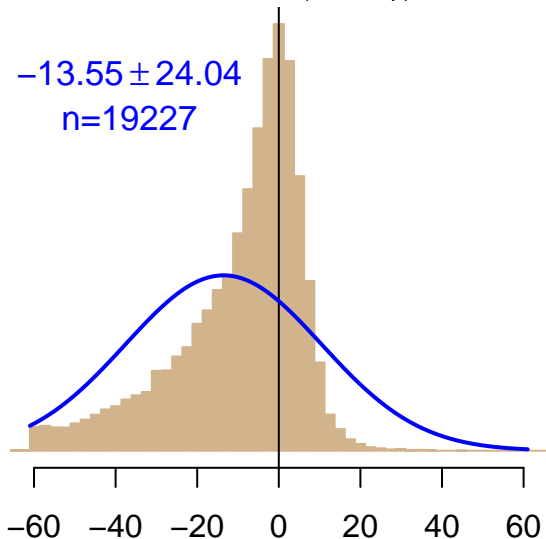


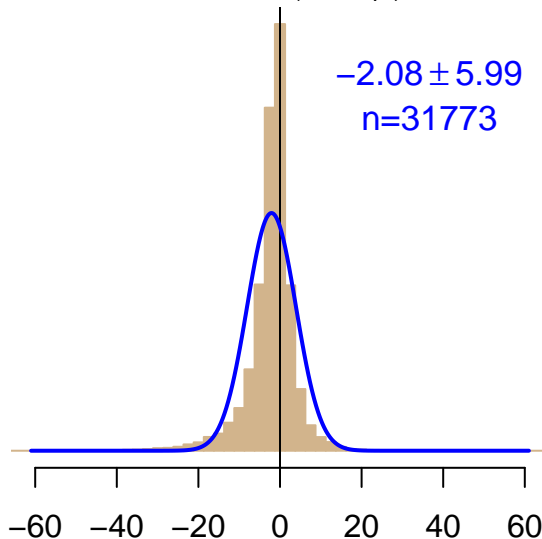
NH "Summer" (Jun–Sep)

$-13.55 \pm 24.04$   
 $n=19227$



NH "Winter" (Nov–Apr)

$-2.08 \pm 5.99$   
 $n=31773$



Simulated–observed  $\Delta[\text{CO}_2]$ ,  $\mu\text{mol mol}^{-1}$

Data from 20–Apr–2007 to 13–Mar–2017