

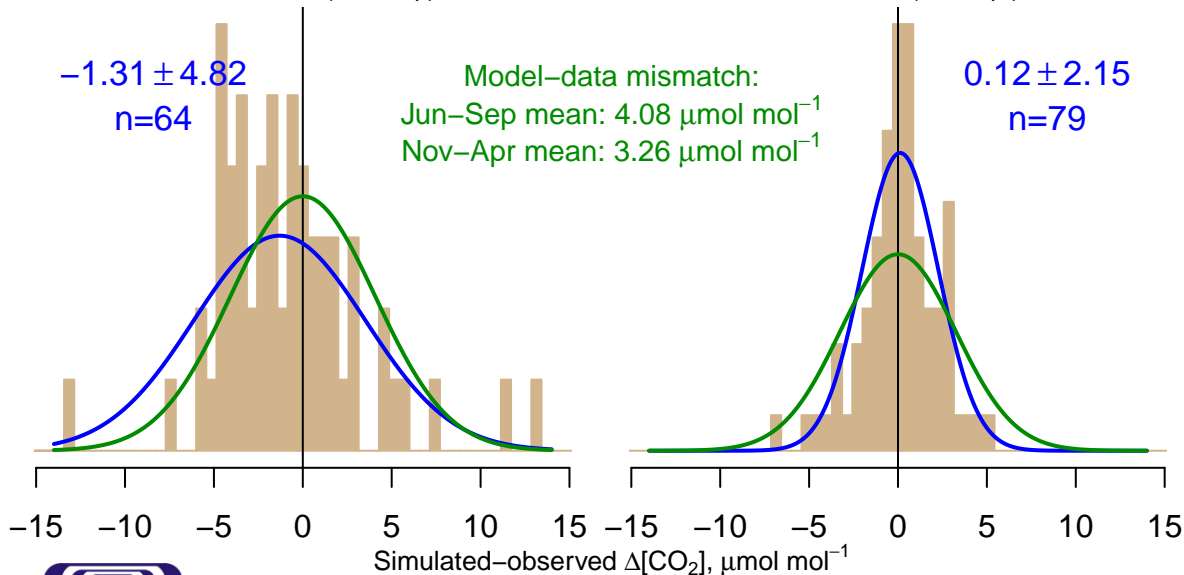
NH "Summer" (Jun–Sep)

-1.31 ± 4.82
n=64

Model–data mismatch:
Jun–Sep mean: $4.08 \mu\text{mol mol}^{-1}$
Nov–Apr mean: $3.26 \mu\text{mol mol}^{-1}$

NH "Winter" (Nov–Apr)

0.12 ± 2.15
n=79



Data from 08–Jan–2010 to 28–Dec–2012

co2_rba-b_aircraft-pfp_26_representative_1000–2000masI

CT2017, created 22–Jul–2019 17:04

