

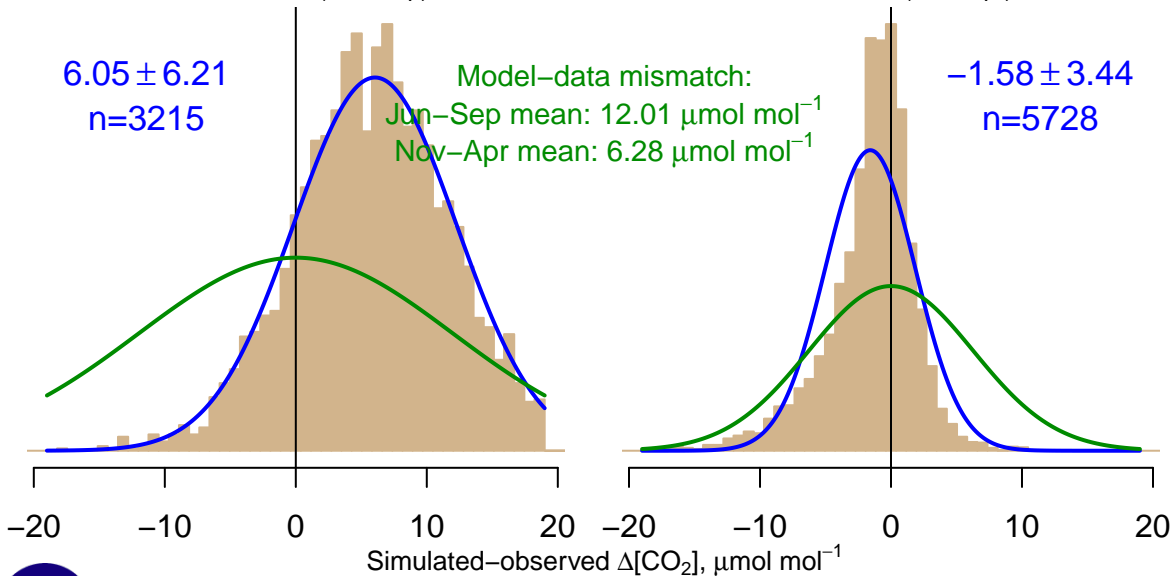
NH "Summer" (Jun–Sep)

$6.05 \pm 6.21$   
 $n=3215$

Model–data mismatch:  
Jun–Sep mean:  $12.01 \mu\text{mol mol}^{-1}$   
Nov–Apr mean:  $6.28 \mu\text{mol mol}^{-1}$

NH "Winter" (Nov–Apr)

$-1.58 \pm 3.44$   
 $n=5728$



Data from 27–Aug–2008 to 31–Mar–2017



*co2\_snp\_tower-insitu\_1\_allvalid-10magl  
CT2017, created 22–Jul–2019 17:10*