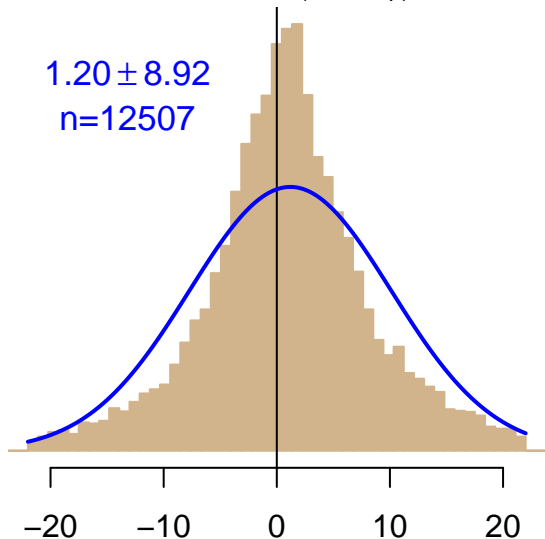


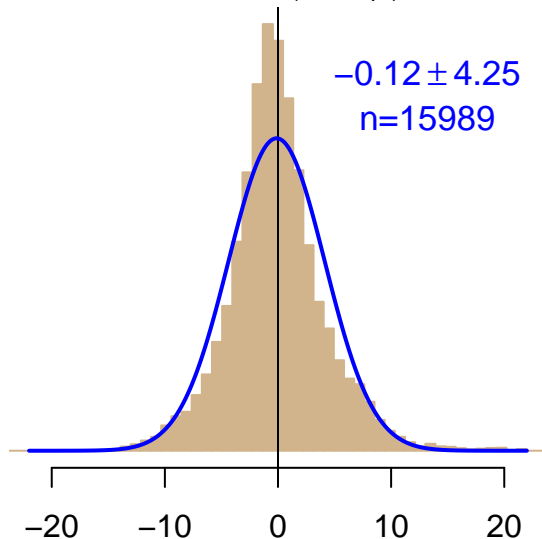
NH "Summer" (Jun–Sep)

1.20 ± 8.92
 $n=12507$



NH "Winter" (Nov–Apr)

-0.12 ± 4.25
 $n=15989$



Simulated–observed $\Delta[\text{CO}_2]$, $\mu\text{mol mol}^{-1}$

Data from 16–Dec–2006 to 17–Dec–2014



co2_svv_tower-insitu_20_allvalid-52magl
CT2017, created 22-Jul-2019 17:13