

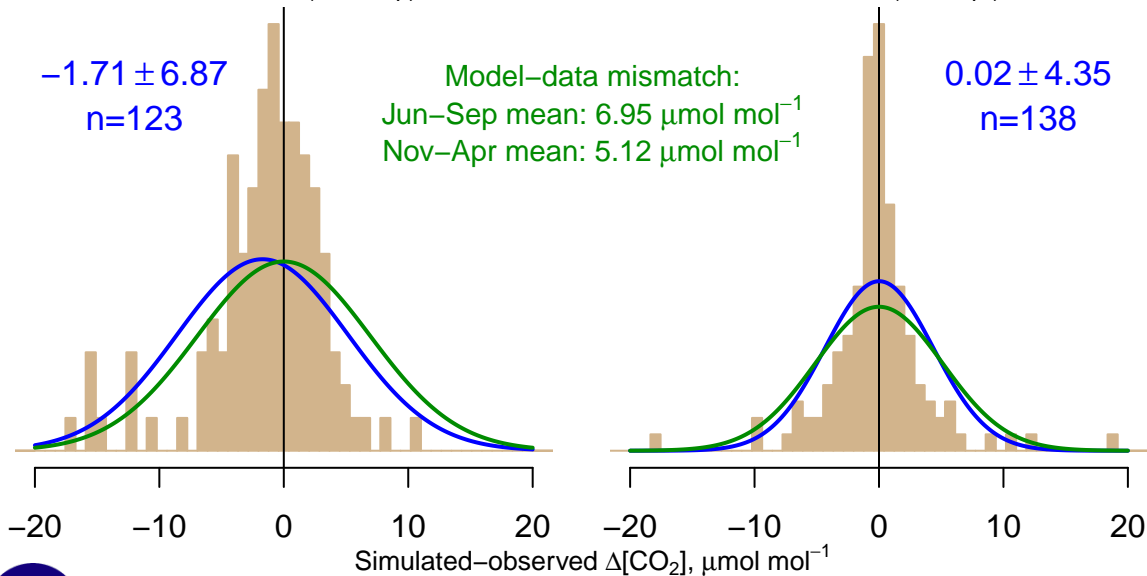
NH "Summer" (Jun–Sep)

-1.71 ± 6.87
 $n=123$

Model–data mismatch:
Jun–Sep mean: $6.95 \mu\text{mol mol}^{-1}$
Nov–Apr mean: $5.12 \mu\text{mol mol}^{-1}$

NH "Winter" (Nov–Apr)

0.02 ± 4.35
 $n=138$



Data from 02–Sep–2003 to 10–Nov–2016

co2_thd_aircraft-pfp_1_allvalid_0–1000masl
CT2017, created 22–Jul–2019 17:15

