

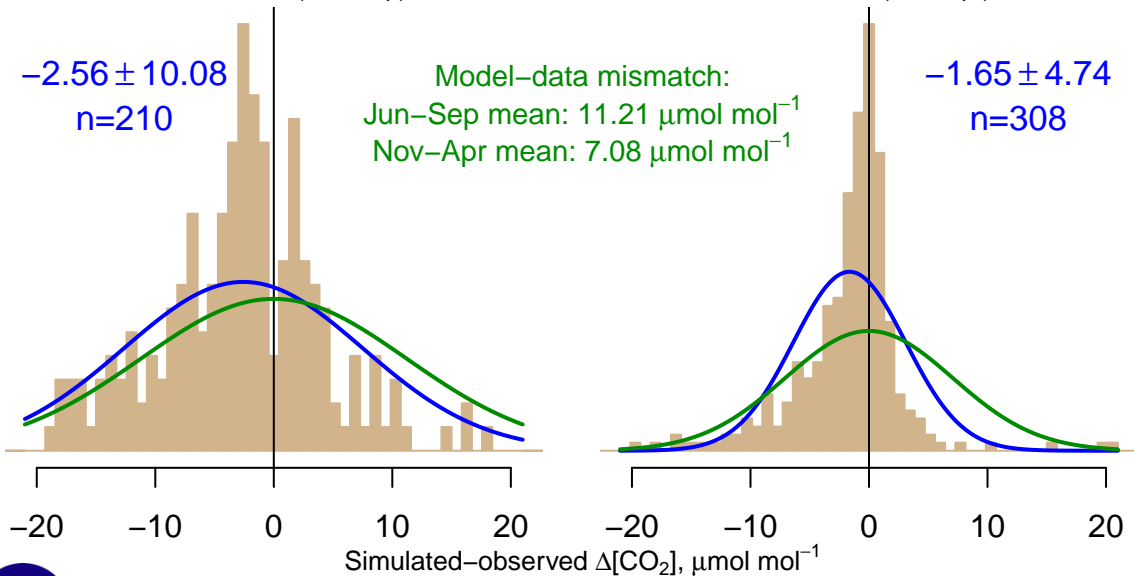
NH "Summer" (Jun–Sep)

$-2.56 \pm 10.08$   
 $n=210$

Model–data mismatch:  
Jun–Sep mean:  $11.21 \mu\text{mol mol}^{-1}$   
Nov–Apr mean:  $7.08 \mu\text{mol mol}^{-1}$

NH "Winter" (Nov–Apr)

$-1.65 \pm 4.74$   
 $n=308$



Data from 19–Apr–2002 to 30–Mar–2017

