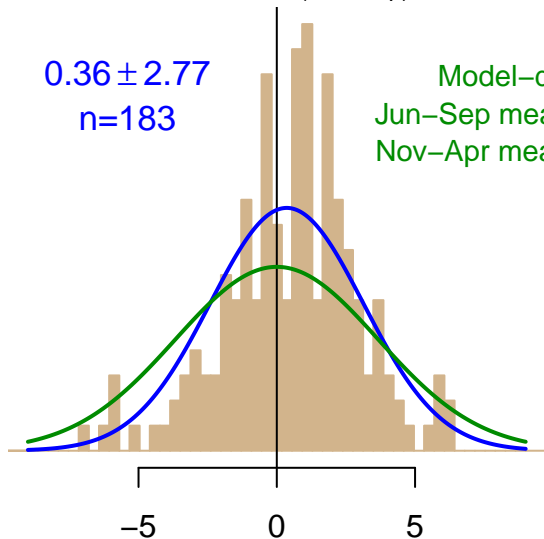


NH "Summer" (Jun–Sep)

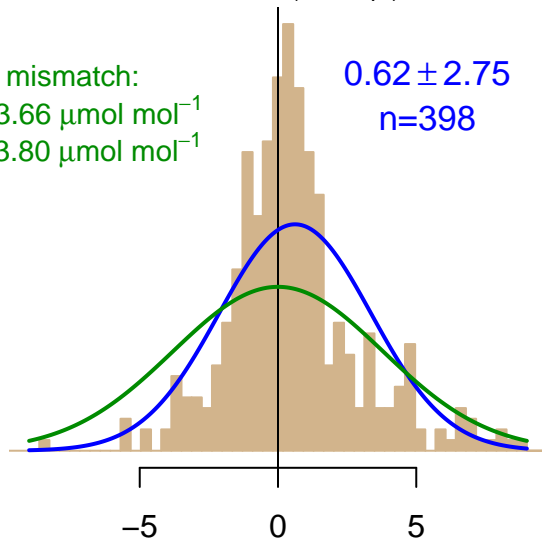
0.36 ± 2.77
 $n=183$

Model–data mismatch:
Jun–Sep mean: $3.66 \mu\text{mol mol}^{-1}$
Nov–Apr mean: $3.80 \mu\text{mol mol}^{-1}$



NH "Winter" (Nov–Apr)

0.62 ± 2.75
 $n=398$



Simulated–observed $\Delta[\text{CO}_2]$, $\mu\text{mol mol}^{-1}$

Data from 05–Jan–2001 to 31–Mar–2017

