

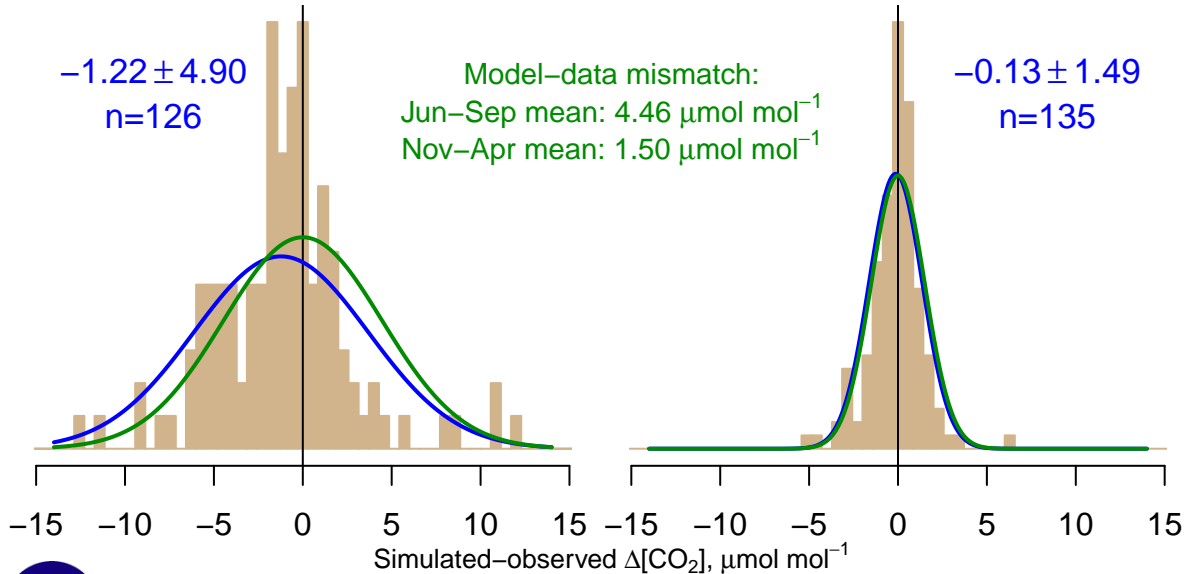
NH "Summer" (Jun–Sep)

-1.22 ± 4.90
 $n=126$

Model–data mismatch:
Jun–Sep mean: $4.46 \mu\text{mol mol}^{-1}$
Nov–Apr mean: $1.50 \mu\text{mol mol}^{-1}$

NH "Winter" (Nov–Apr)

-0.13 ± 1.49
 $n=135$



Data from 14–Sep–2004 to 09–Mar–2016

