

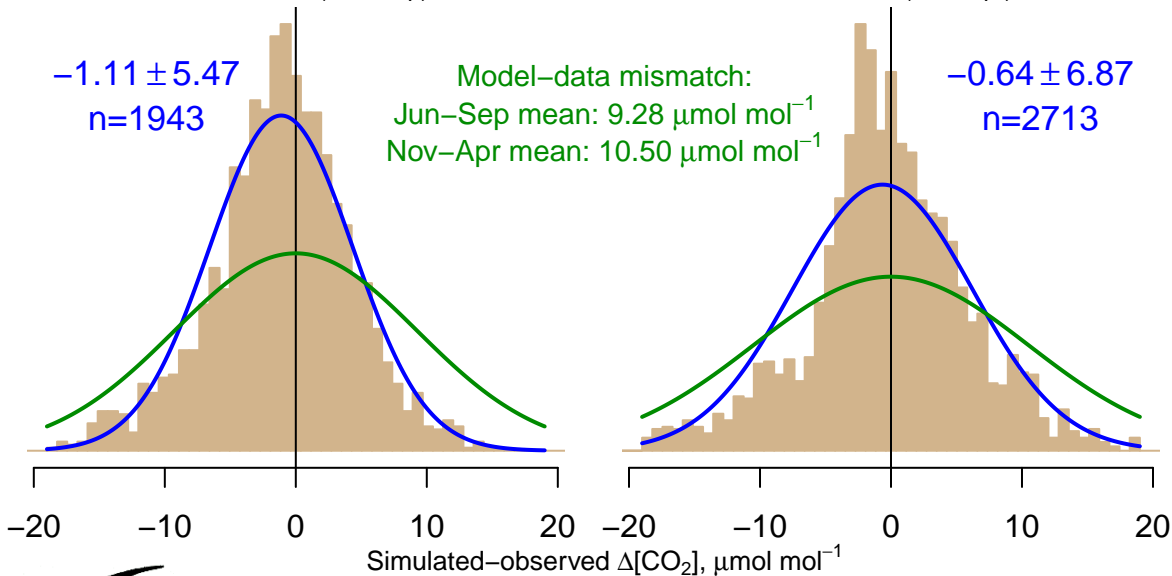
NH "Summer" (Jun–Sep)

-1.11 ± 5.47
 $n=1943$

Model–data mismatch:
Jun–Sep mean: $9.28 \mu\text{mol mol}^{-1}$
Nov–Apr mean: $10.50 \mu\text{mol mol}^{-1}$

NH "Winter" (Nov–Apr)

-0.64 ± 6.87
 $n=2713$



Data from 23–May–2005 to 07–Mar–2013



co2_yak_tower-insitu_20_allvalid-11magl
CT2017, created 22–Jul–2019 17:20