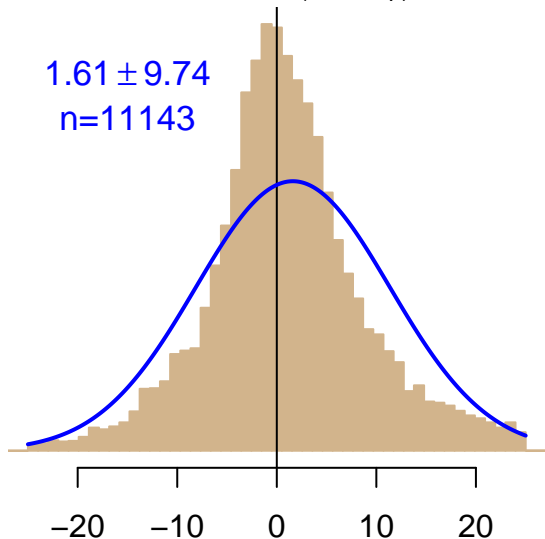


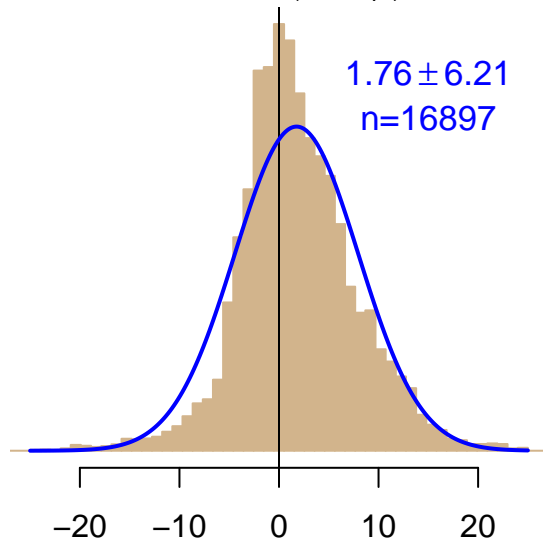
NH "Summer" (Jun–Sep)

1.61 ± 9.74
 $n=11143$



NH "Winter" (Nov–Apr)

1.76 ± 6.21
 $n=16897$



Data from 22–May–2005 to 07–Mar–2013



co2_yak_tower-insitu_20_allvalid-77magl
CT2017, created 22-Jul-2019 17:20