

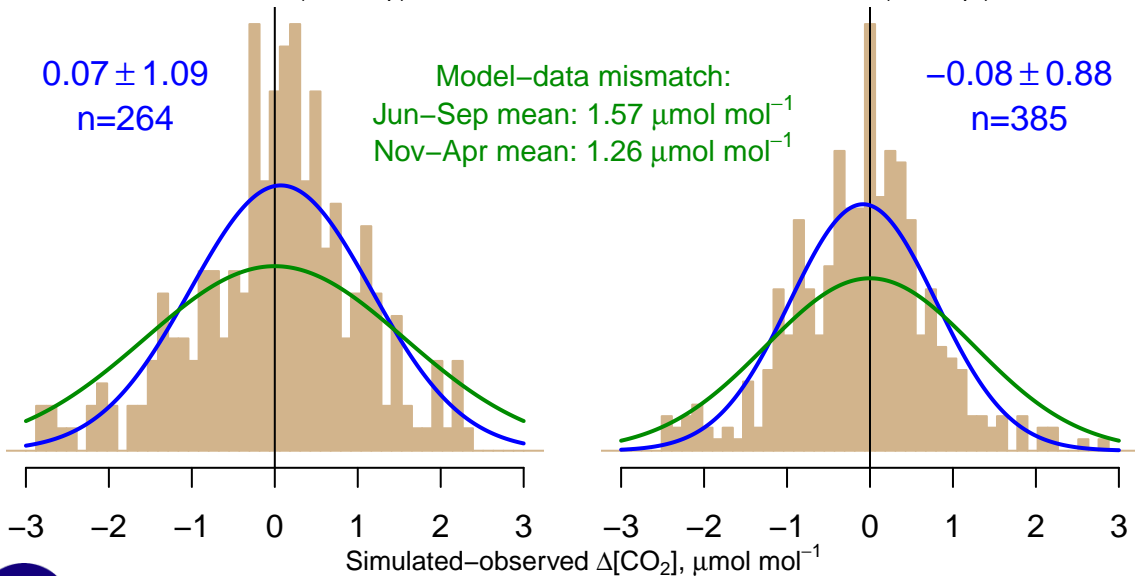
NH "Summer" (Jun–Sep)

$0.07 \pm 1.09$   
 $n=264$

Model–data mismatch:  
Jun–Sep mean:  $1.57 \mu\text{mol mol}^{-1}$   
Nov–Apr mean:  $1.26 \mu\text{mol mol}^{-1}$

NH "Winter" (Nov–Apr)

$-0.08 \pm 0.88$   
 $n=385$



Data from 01–Jan–2001 to 30–Mar–2017



*co2\_zep\_surface-flask\_1\_representative*  
*CT2017, created 22–Jul–2019 17:21*