

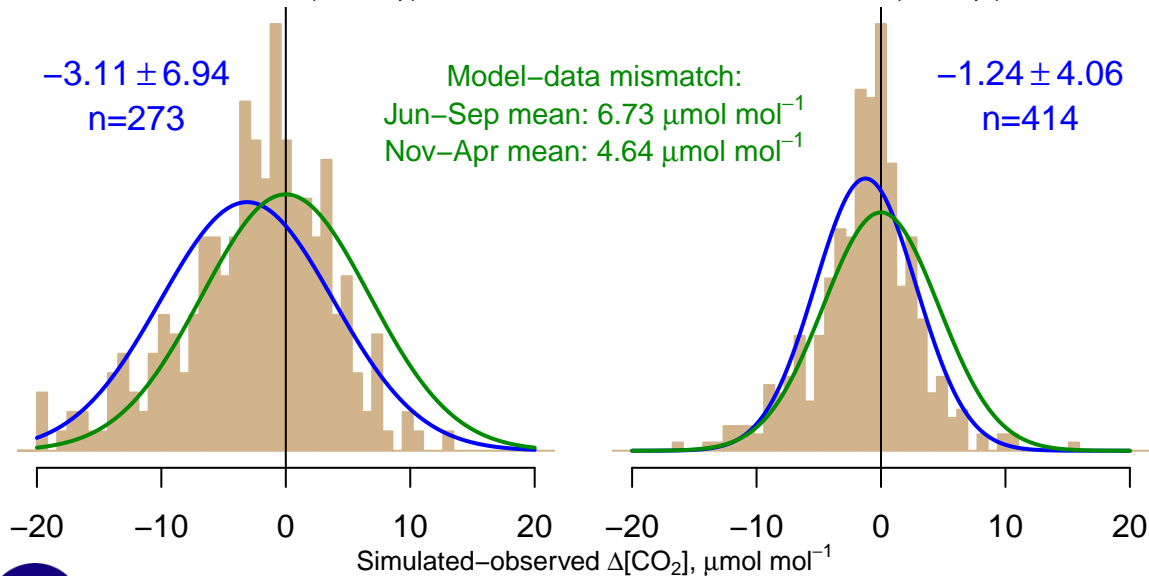
NH "Summer" (Jun–Sep)

$-3.11 \pm 6.94$   
 $n=273$

Model–data mismatch:  
Jun–Sep mean:  $6.73 \mu\text{mol mol}^{-1}$   
Nov–Apr mean:  $4.64 \mu\text{mol mol}^{-1}$

NH "Winter" (Nov–Apr)

$-1.24 \pm 4.06$   
 $n=414$



Data from 04–Jan–2001 to 22–Jun–2011

