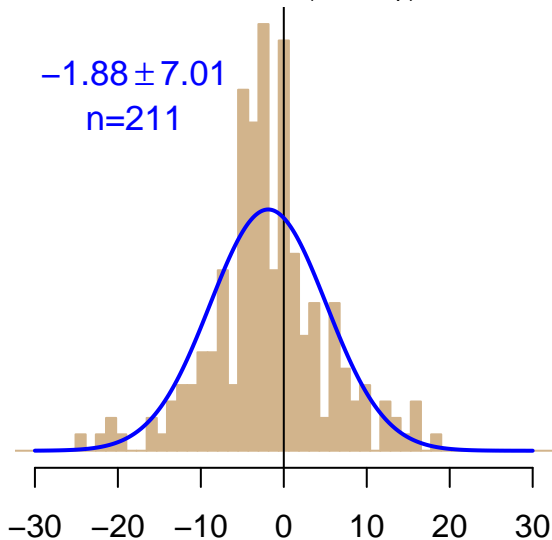


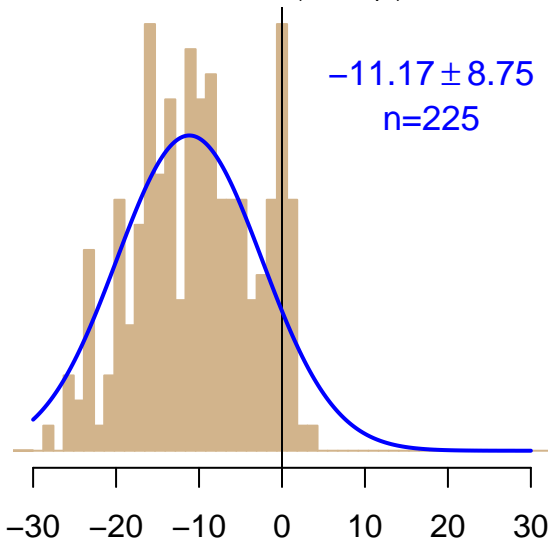
NH "Summer" (Jun–Sep)

-1.88 ± 7.01
 $n=211$



NH "Winter" (Nov–Apr)

-11.17 ± 8.75
 $n=225$



Simulated–observed $\Delta[\text{CO}_2]$, $\mu\text{mol mol}^{-1}$

Data from 16–Aug–2007 to 29–Jun–2016

