

NH "Summer" (Jun–Sep)

4.16 ± 4.07
 $n=156$

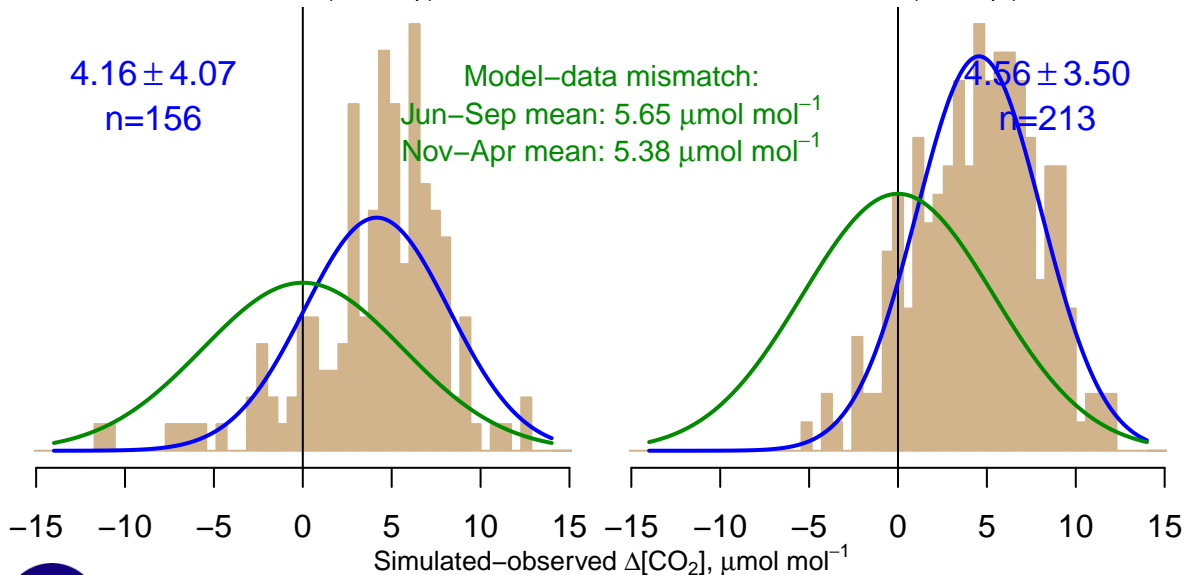
Model–data mismatch:

Jun–Sep mean: $5.65 \mu\text{mol mol}^{-1}$

Nov–Apr mean: $5.38 \mu\text{mol mol}^{-1}$

NH "Winter" (Nov–Apr)

4.56 ± 3.50
 $n=213$



Data from 08–Jan–2004 to 19–Mar–2019



co2_bkt_surface-flask_1_representative
CT2019B, created 17–Dec–2020 15:31